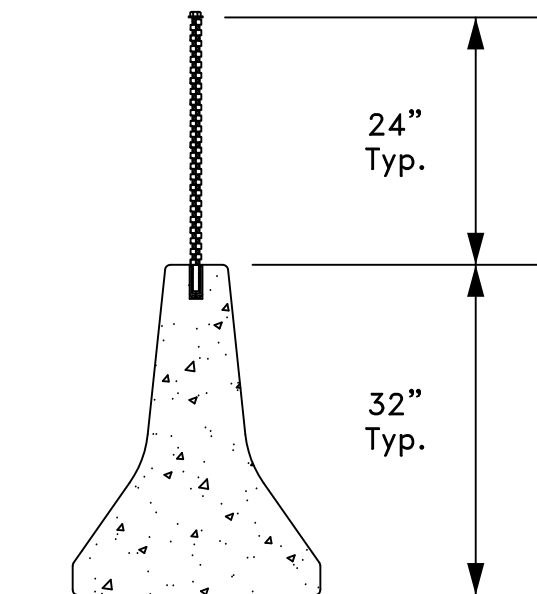
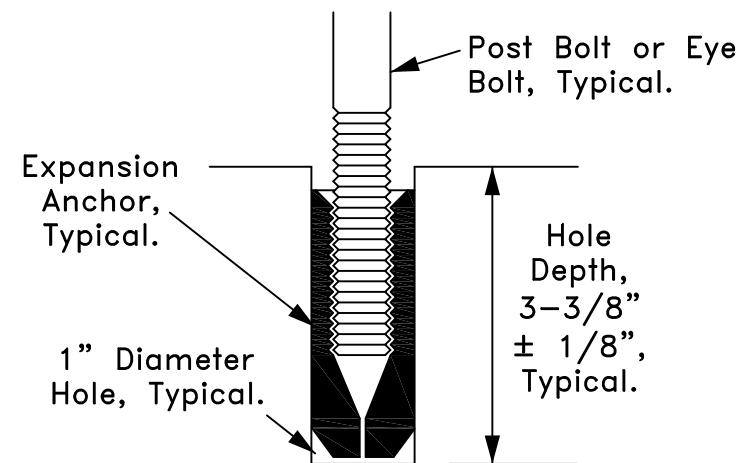


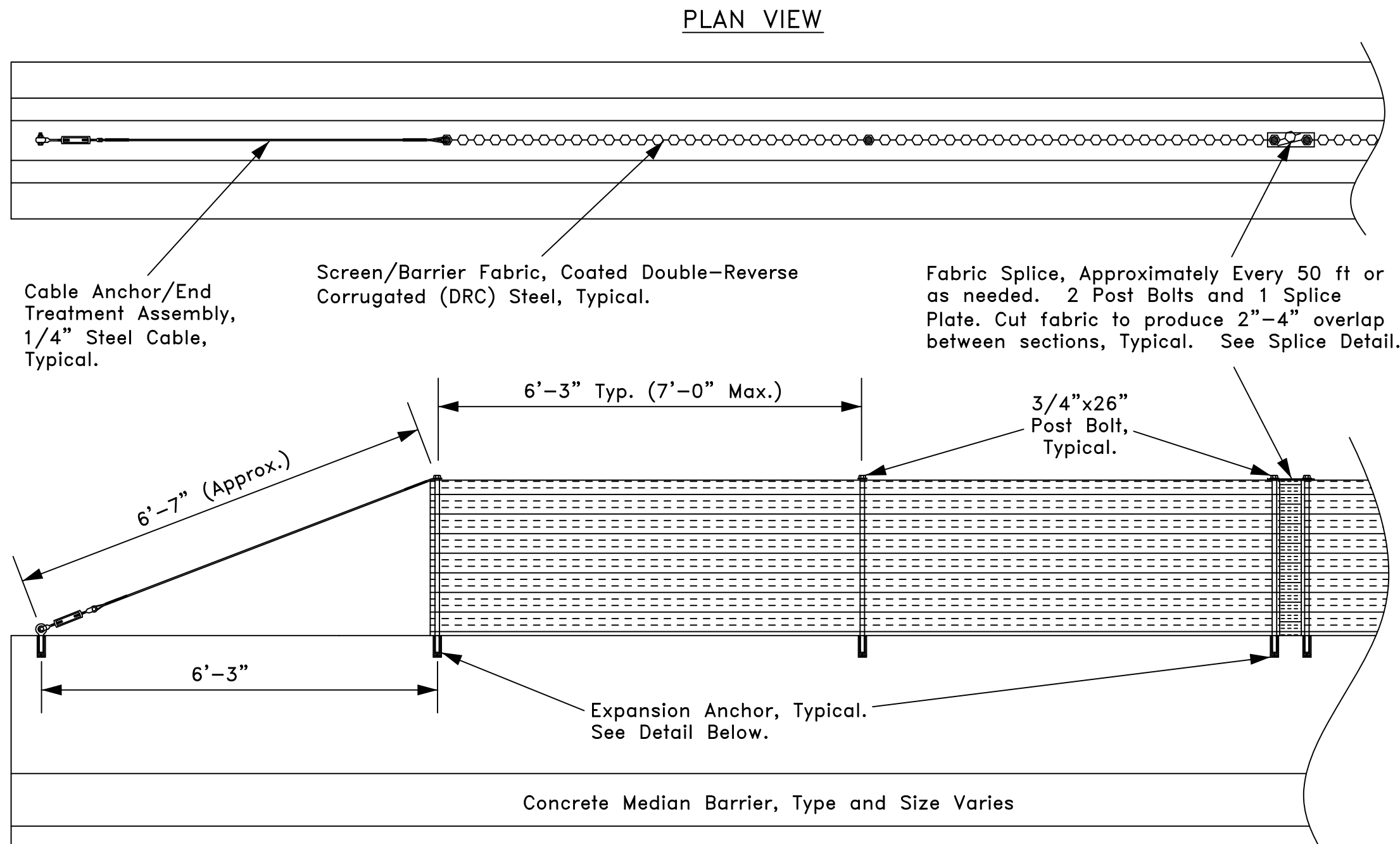
Fabric Splice Detail



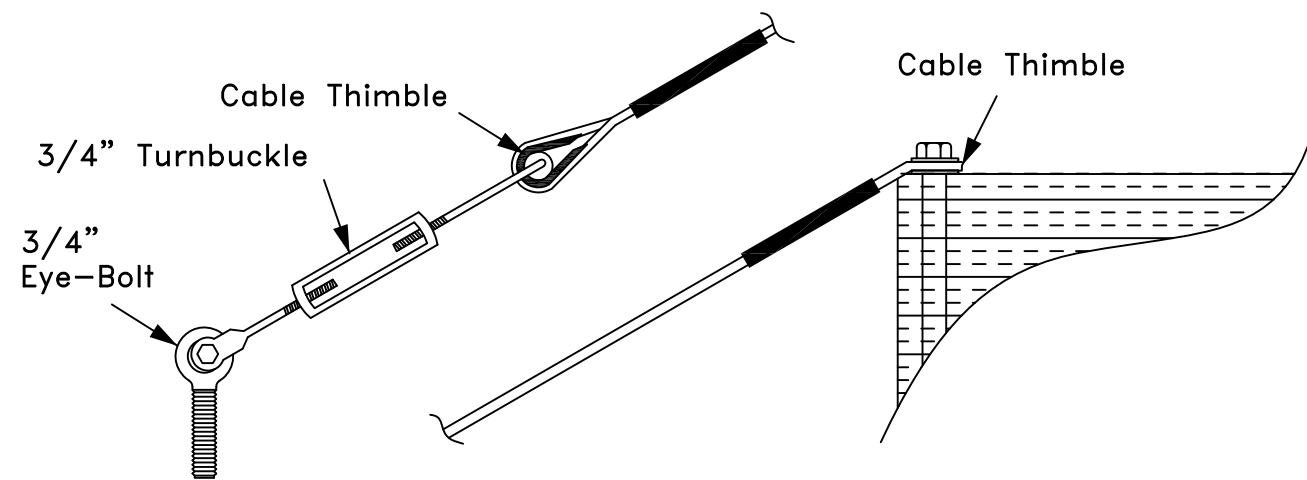
SECTION VIEW



Expansion Anchor Detail



SIDE ELEVATION VIEW

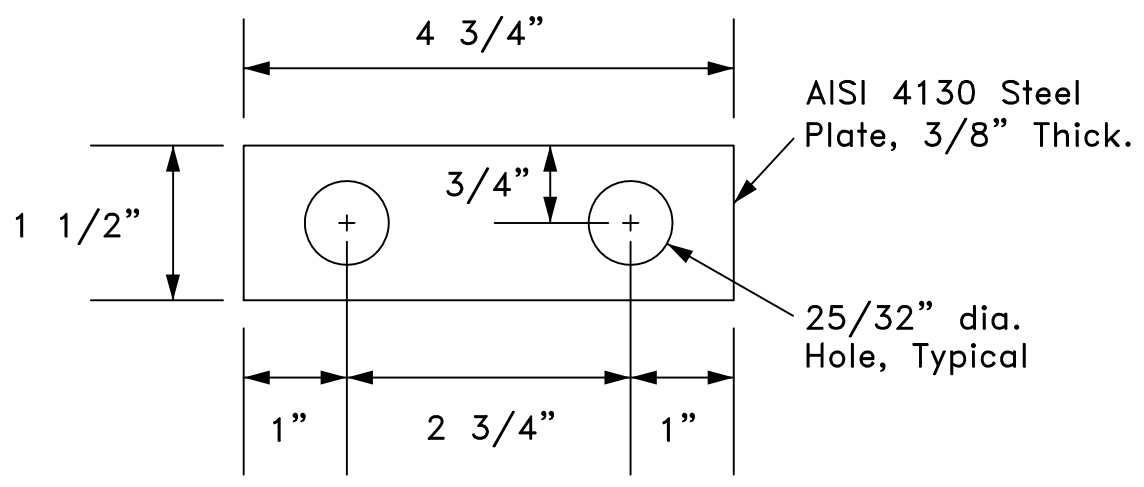
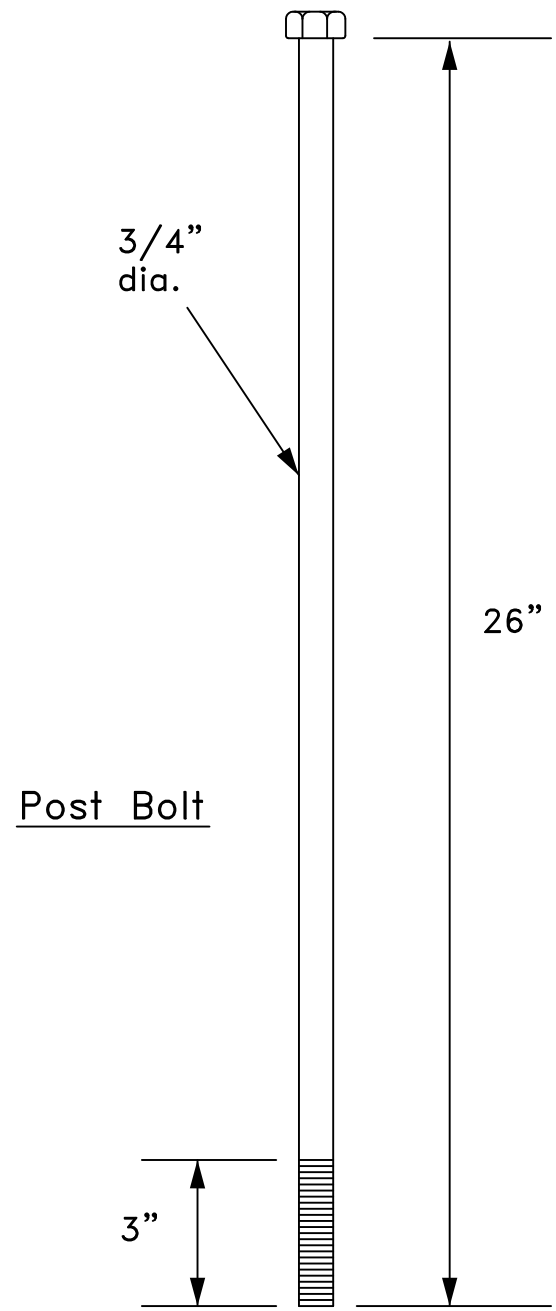


Cable Anchor Assembly

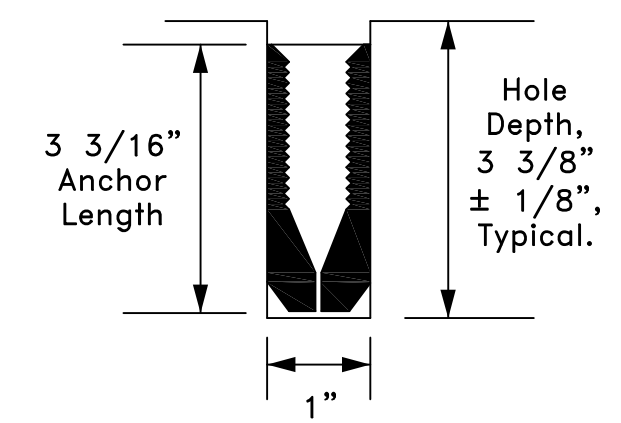
TRANSPO® 20 Jones Street
 New Rochelle, NY 10801
 INDUSTRIES, Inc. 914-636-1000
 The Smart Solutions Company www.transpo.com

Screen-Safe
 Glare Screen & Work-Zone Safety Shield
 for Concrete Barrier

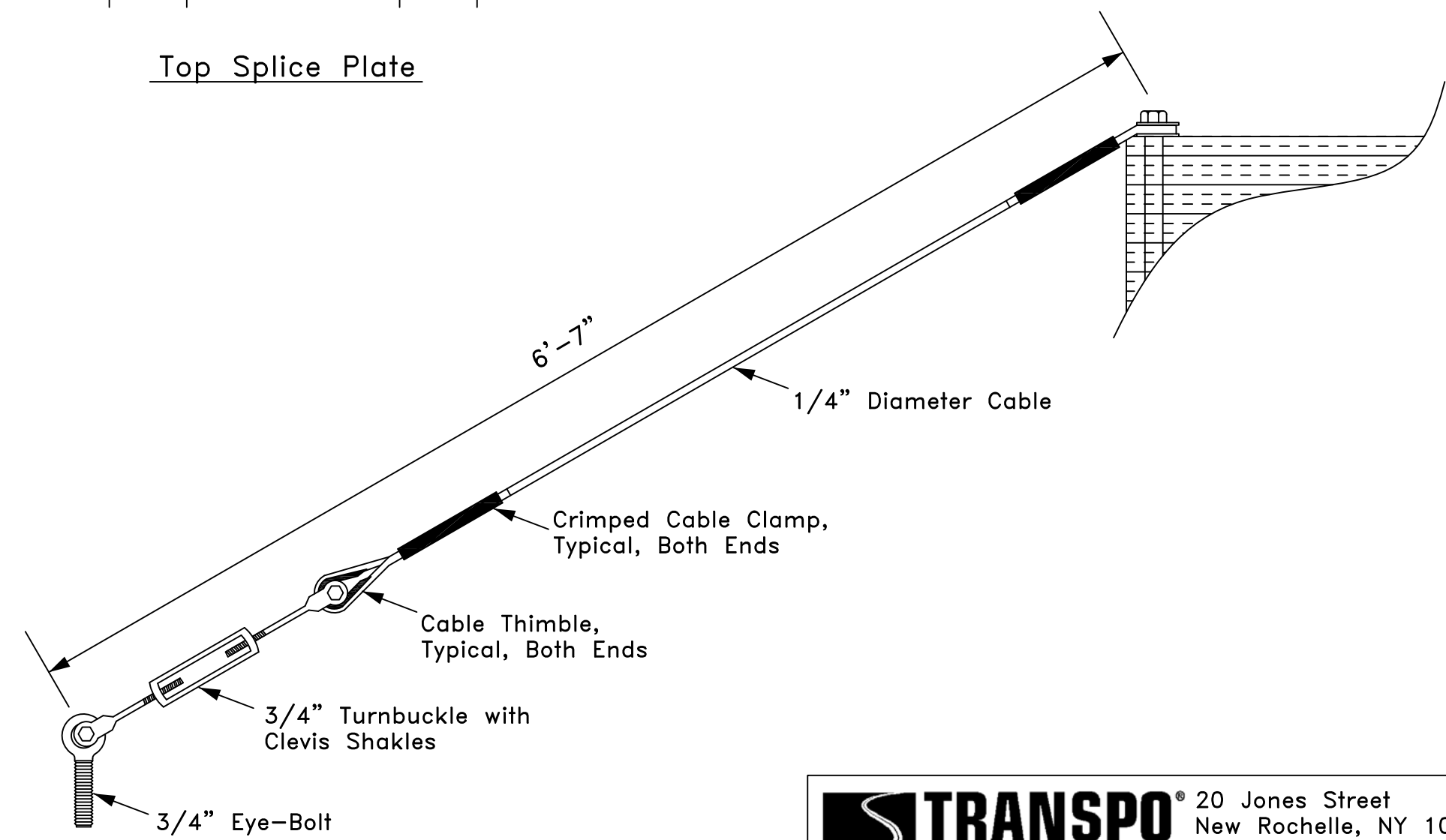
Scale: Not To Scale	Date: April 2012
Drawing No. SS-CB-1	Sheet: 1 of 2




Top Splice Plate



Expansion Anchor



Cable Anchor/End Treatment Assembly

 TRANSPO [®] INDUSTRIES, Inc. The Smart Solutions Company		20 Jones Street New Rochelle, NY 10801 914-636-1000 www.transpo.com
Screen-Safe Glare Screen & Work-Zone Safety Shield for Concrete Barrier, Component Details		
Scale: Not To Scale	Date: November 2011	
Drawing No. SS-CB-2	Sheet: 2 of 2	