



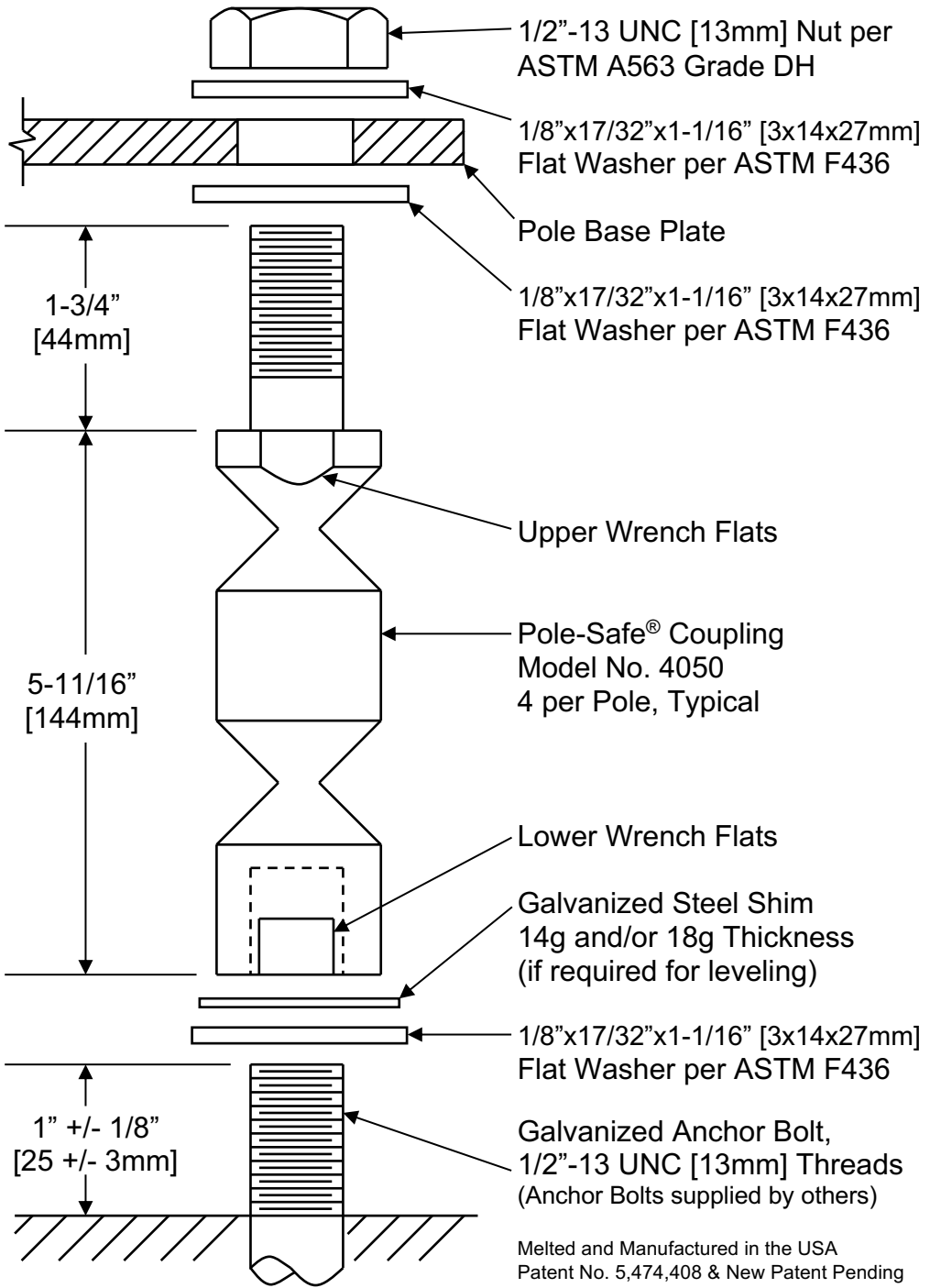
Pole-Safe[®]

BREAKAWAY SUPPORT SYSTEM

 800-321-7870

 info@transpo.com

 transpo.com



Melted and Manufactured in the USA
Patent No. 5,474,408 & New Patent Pending

SPECIFICATIONS

Performance Criteria:

1. Pole-Safe® conforms to AASHTO "Standard Specifications for Structural Supports for Highway Signs, Luminaires and Traffic Signals."
2. Pole-Safe® has been crash-tested and FHWA approved in accordance with the requirements of NCHRP Report 350, "Recommended Procedures for the Safety Performance Evaluation of Highway Features."

Physical Properties per Coupling:

1. Ultimate Tensile Strength = 12.1 kips [53.8 kN], minimum
2. Tensile Yield Strength = 10.4 kips [46.5 kN], minimum
3. Ultimate Restrained Shear Strength:
 - 0.6 kips [2.6 kN], minimum
 - 1.0 kips [4.4 kN], maximum

Corrosion Protection:

1. Pole-Safe® couplings, nuts, bolts, and washers are galvanized after fabrication in accordance with ASTM A153. All leveling shims are galvanized after fabrication in accordance with ASTM A653.

1/25

Pole-Safe® Model No. 4050 Breakaway Support System for Light Poles



20 Jones Street
New Rochelle, NY 10801
914-636-1000
www.transpo.com



Pole-Safe® Model No. 4050 Breakaway Support System for Light Poles

INSTALLATION INSTRUCTIONS

NOTE: Proper Installation is essential for the Pole-Safe Breakaway Support System to function correctly as designed.

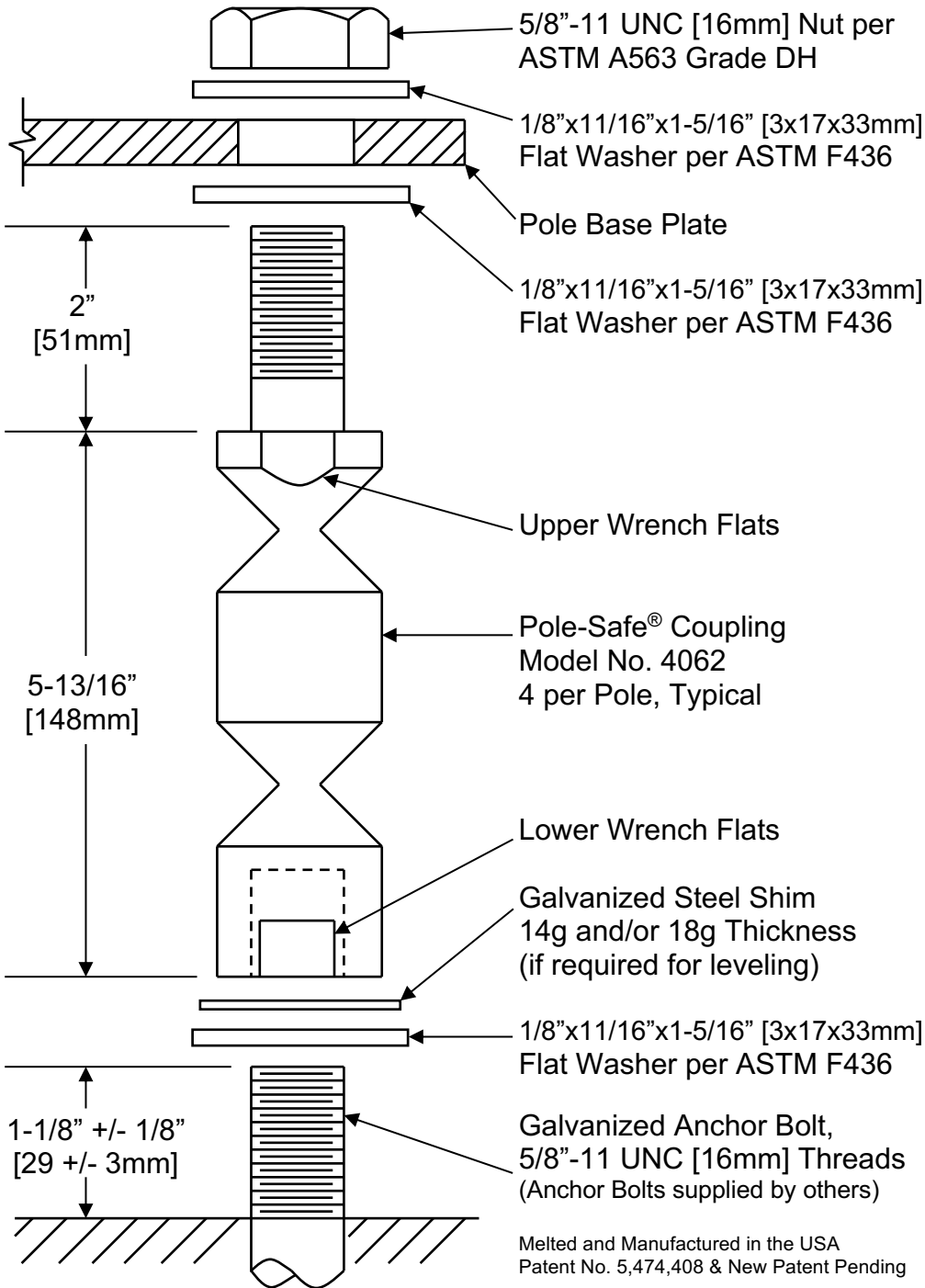
1. Surface of foundation around anchor bolts must be smooth, flat and free of debris.
2. Existing anchor bolts MUST be sized to the proper projection height as shown on the reverse side of these instructions. Then, anchor bolts shall be cleaned, and if necessary, coated with cold galvanizing material prior to installing Pole-Safe couplings.
3. Install lower flat washers, and thread Pole-Safe couplings on to anchor bolts.
4. If needed, shims are provided for leveling of the pole base plate and may be installed at the base of the couplings. No more than 2 shims shall be installed on any one coupling. For larger adjustments that may be required, install no more than one additional flat washer under the base plate on the top shank of the coupling(s).
5. Use lower wrench flats to tighten Pole-Safe couplings on to the anchor bolts. Secure couplings as tight as possible using conventional wrenches. Do not use a pipe wrench. Couplings must be seated squarely on the washers, and washers must be seated uniformly on top of the foundation. If necessary, remove coupling and reduce the anchor bolt projection height to allow proper seating of the couplings.
6. Install a flat washer on top of each Pole-Safe coupling and set the pole with base plate on top of the couplings.
7. Install a flat washer and nut on to each Pole-Safe coupling extended through the pole base plate. If pole is not plumb, install shims and/or washers for proper leveling as described in Step 4 above.
8. Tighten each nut on to pole base plate. Pole-Safe couplings must be held with an additional wrench on the upper wrench flats to prevent an induced torque stress across the necked portion of the couplings. Nuts shall be tightened using the turn-of-nut method in accordance with American Institute of Steel Construction (AISC) procedures (for ASTM A325 and A490 anchor bolts, 1/3 rotation past “snug tight”).

Transpo Industries, Inc., 20 Jones Street, New Rochelle, NY 10801-6098

Phone: 914-636-1000

info@transpo.com

www.transpo.com



SPECIFICATIONS

Performance Criteria:

1. Pole-Safe® conforms to AASHTO "Standard Specifications for Structural Supports for Highway Signs, Luminaires and Traffic Signals."
2. Pole-Safe® has been crash-tested and FHWA approved in accordance with the requirements of NCHRP Report 350, "Recommended Procedures for the Safety Performance Evaluation of Highway Features."

Physical Properties per Coupling:

1. Ultimate Tensile Strength = 22.8 kips [101.9 kN], minimum
2. Tensile Yield Strength = 19.8 kips [88.3 kN], minimum
3. Ultimate Restrained Shear Strength:
 - 1.5 kips [6.6 kN], minimum
 - 2.5 kips [11.1 kN], maximum

Corrosion Protection:

1. Pole-Safe® couplings, nuts, bolts, and washers are galvanized after fabrication in accordance with ASTM A153. All leveling shims are galvanized after fabrication in accordance with ASTM A653.

1/25

Pole-Safe® Model No. 4062 Breakaway Support System for Light Poles



20 Jones Street
New Rochelle, NY 10801
914-636-1000
www.transpo.com



Pole-Safe® Model No. 4062 Breakaway Support System for Light Poles

INSTALLATION INSTRUCTIONS

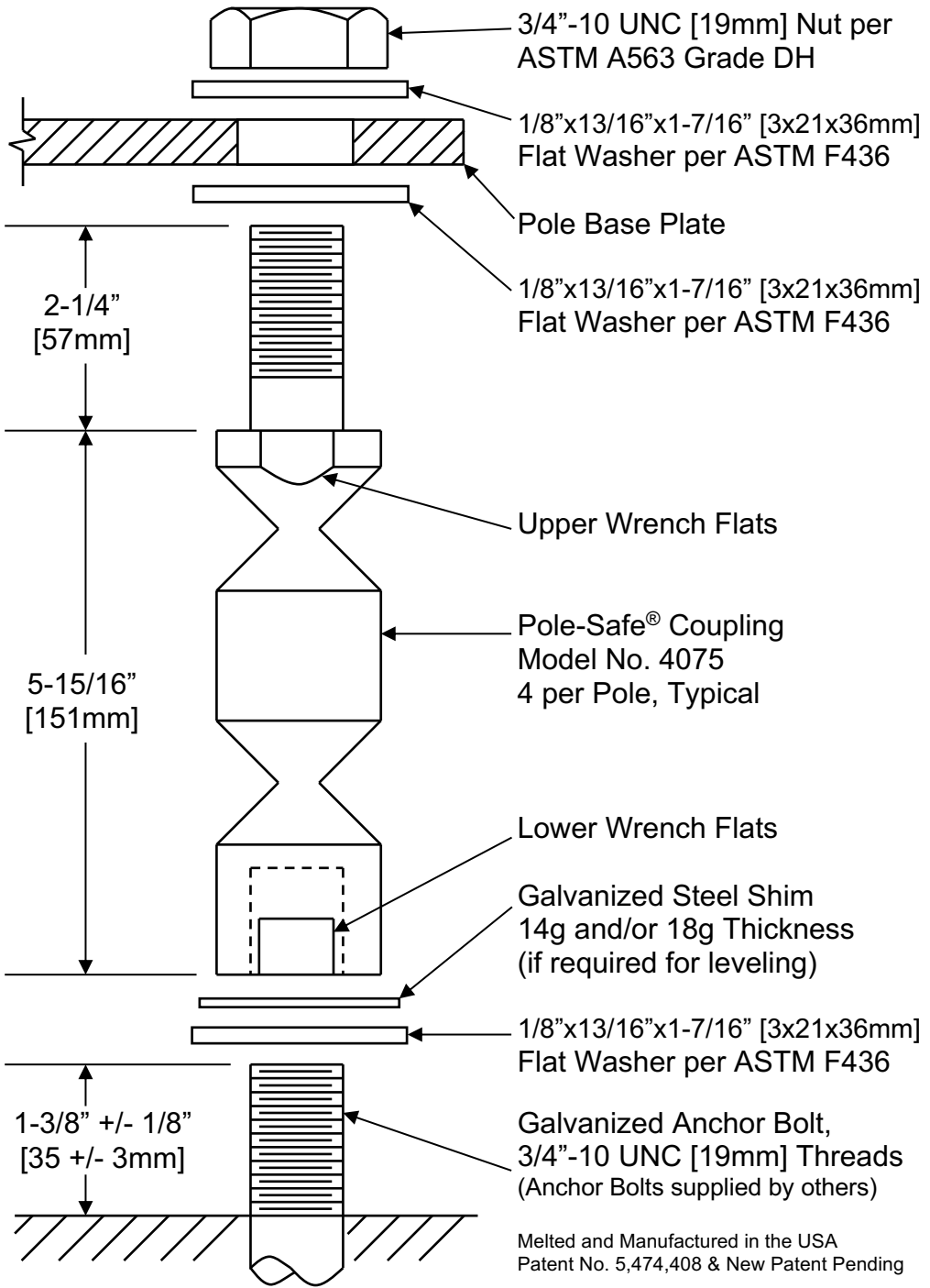
NOTE: Proper Installation is essential for the Pole-Safe Breakaway Support System to function correctly as designed.

1. Surface of foundation around anchor bolts must be smooth, flat and free of debris.
2. Existing anchor bolts MUST be sized to the proper projection height as shown on the reverse side of these instructions. Then, anchor bolts shall be cleaned, and if necessary, coated with cold galvanizing material prior to installing Pole-Safe couplings.
3. Install lower flat washers, and thread Pole-Safe couplings on to anchor bolts.
4. If needed, shims are provided for leveling of the pole base plate and may be installed at the base of the couplings. No more than 2 shims shall be installed on any one coupling. For larger adjustments that may be required, install no more than one additional flat washer under the base plate on the top shank of the coupling(s).
5. Use lower wrench flats to tighten Pole-Safe couplings on to the anchor bolts. Secure couplings as tight as possible using conventional wrenches. Do not use a pipe wrench. Couplings must be seated squarely on the washers, and washers must be seated uniformly on top of the foundation. If necessary, remove coupling and reduce the anchor bolt projection height to allow proper seating of the couplings.
6. Install a flat washer on top of each Pole-Safe coupling and set the pole with base plate on top of the couplings.
7. Install a flat washer and nut on to each Pole-Safe coupling extended through the pole base plate. If pole is not plumb, install shims and/or washers for proper leveling as described in Step 4 above.
8. Tighten each nut on to pole base plate. Pole-Safe couplings must be held with an additional wrench on the upper wrench flats to prevent an induced torque stress across the necked portion of the couplings. Nuts shall be tightened using the turn-of-nut method in accordance with American Institute of Steel Construction (AISC) procedures (for ASTM A325 and A490 anchor bolts, 1/3 rotation past "snug tight").

Transpo Industries, Inc., 20 Jones Street, New Rochelle, NY 10801-6098
Phone: 914-636-1000

info@transpo.com

www.transpo.com



SPECIFICATIONS

Performance Criteria:

1. Pole-Safe® conforms to AASHTO "Standard Specifications for Structural Supports for Highway Signs, Luminaires and Traffic Signals."
2. Pole-Safe® has been crash-tested and FHWA approved in accordance with the requirements of NCHRP Report 350, "Recommended Procedures for the Safety Performance Evaluation of Highway Features."

Physical Properties per Coupling:

1. Ultimate Tensile Strength = 29.4 kips [131.0 kN], minimum
2. Tensile Yield Strength = 25.5 kips [113.6 kN], minimum
3. Ultimate Restrained Shear Strength:
 - 2.0 kips [8.9 kN], minimum
 - 3.0 kips [13.3 kN], maximum

Corrosion Protection:

1. Pole-Safe® couplings, nuts, bolts, and washers are galvanized after fabrication in accordance with ASTM A153. All leveling shims are galvanized after fabrication in accordance with ASTM A653.

Pole-Safe® Model No. 4075 Breakaway Support System for Light Poles



20 Jones Street
New Rochelle, NY 10801
914-636-1000
www.transpo.com

Melted and Manufactured in the USA
Patent No. 5,474,408 & New Patent Pending



Pole-Safe® Model No. 4075 Breakaway Support System for Light Poles

INSTALLATION INSTRUCTIONS

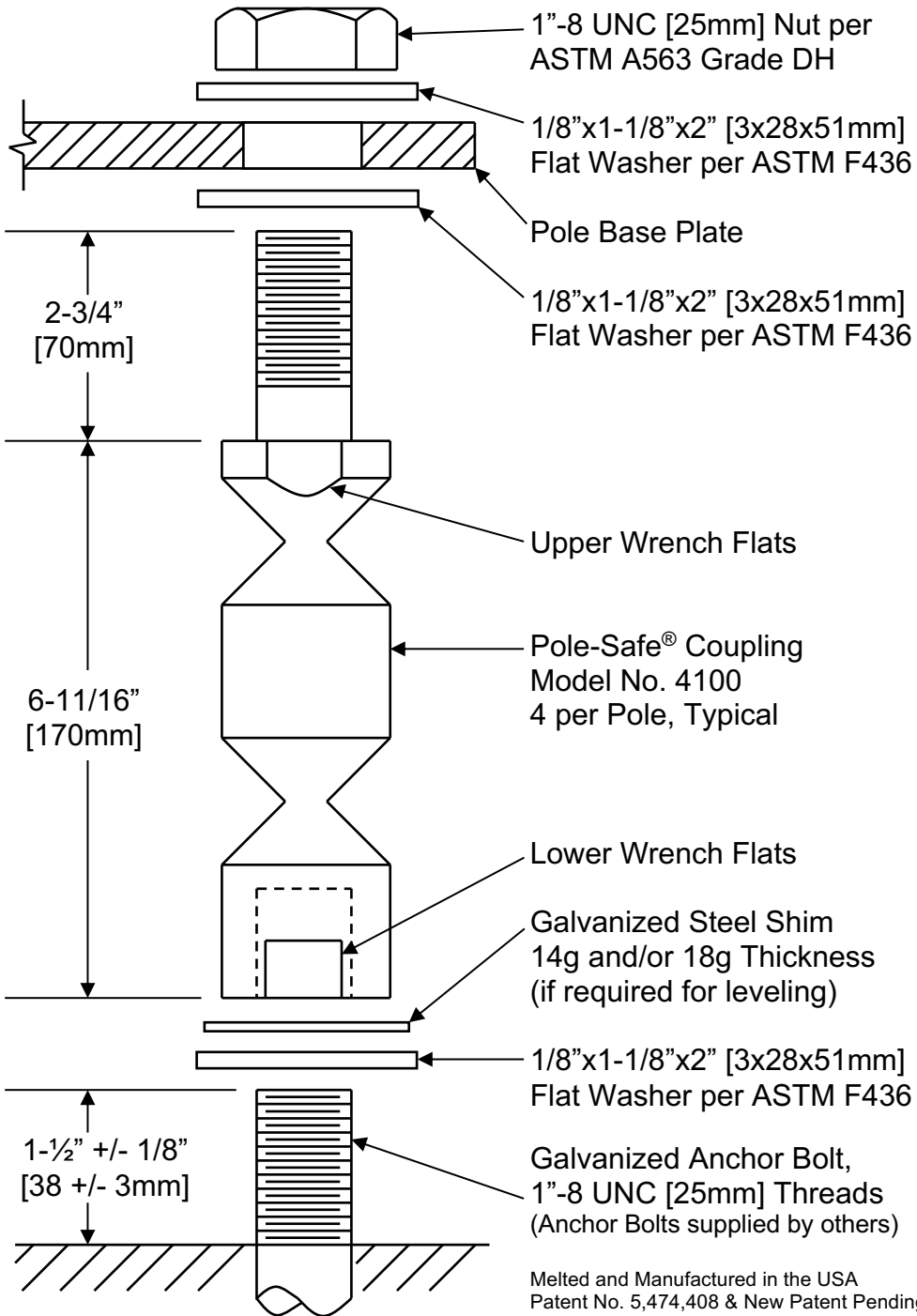
NOTE: Proper Installation is essential for the Pole-Safe Breakaway Support System to function correctly as designed.

1. Surface of foundation around anchor bolts must be smooth, flat and free of debris.
2. Existing anchor bolts MUST be sized to the proper projection height as shown on the reverse side of these instructions. Then, anchor bolts shall be cleaned, and if necessary, coated with cold galvanizing material prior to installing Pole-Safe couplings.
3. Install lower flat washers, and thread Pole-Safe couplings on to anchor bolts.
4. If needed, shims are provided for leveling of the pole base plate and may be installed at the base of the couplings. No more than 2 shims shall be installed on any one coupling. For larger adjustments that may be required, install no more than one additional flat washer under the base plate on the top shank of the coupling(s).
5. Use lower wrench flats to tighten Pole-Safe couplings on to the anchor bolts. Secure couplings as tight as possible using conventional wrenches. Do not use a pipe wrench. Couplings must be seated squarely on the washers, and washers must be seated uniformly on top of the foundation. If necessary, remove coupling and reduce the anchor bolt projection height to allow proper seating of the couplings.
6. Install a flat washer on top of each Pole-Safe coupling and set the pole with base plate on top of the couplings.
7. Install a flat washer and nut on to each Pole-Safe coupling extended through the pole base plate. If pole is not plumb, install shims and/or washers for proper leveling as described in Step 4 above.
8. Tighten each nut on to pole base plate. Pole-Safe couplings must be held with an additional wrench on the upper wrench flats to prevent an induced torque stress across the necked portion of the couplings. Nuts shall be tightened using the turn-of-nut method in accordance with American Institute of Steel Construction (AISC) procedures (for ASTM A325 and A490 anchor bolts, 1/3 rotation past “snug tight”).

Transpo Industries, Inc., 20 Jones Street, New Rochelle, NY 10801-6098
Phone: 914-636-1000

info@transpo.com

www.transpo.com



Melted and Manufactured in the USA
Patent No. 5,474,408 & New Patent Pending

SPECIFICATIONS

Performance Criteria:

1. Pole-Safe® conforms to AASHTO "Standard Specifications for Structural Supports for Highway Signs, Luminaires and Traffic Signals."
2. Pole-Safe® has been crash-tested and FHWA approved in accordance with the requirements of NCHRP Report 350, "Recommended Procedures for the Safety Performance Evaluation of Highway Features."
3. Maximum Allowable Pole Mass = 930 lb [450 kg] (total, including fixtures).

Physical Properties per Coupling:

1. Ultimate Tensile Strength = 49.8 kips [221.5 kN], minimum
2. Tensile Yield Strength = 43.2 kips [192.0 kN], minimum
3. Ultimate Restrained Shear Strength:
 - 3.8 kips [16.9 kN], minimum
 - 5.5 kips [24.5 kN], maximum

Corrosion Protection:

1. Pole-Safe® couplings, nuts, bolts, and washers are galvanized after fabrication in accordance with ASTM A153. All leveling shims are galvanized after fabrication in accordance with ASTM A653.

1/25

Pole-Safe® Model No. 4100 Breakaway Support System for Light Poles



20 Jones Street
New Rochelle, NY 10801
914-636-1000
www.transpo.com



Pole-Safe® Model No. 4100 Breakaway Support System for Light Poles

INSTALLATION INSTRUCTIONS

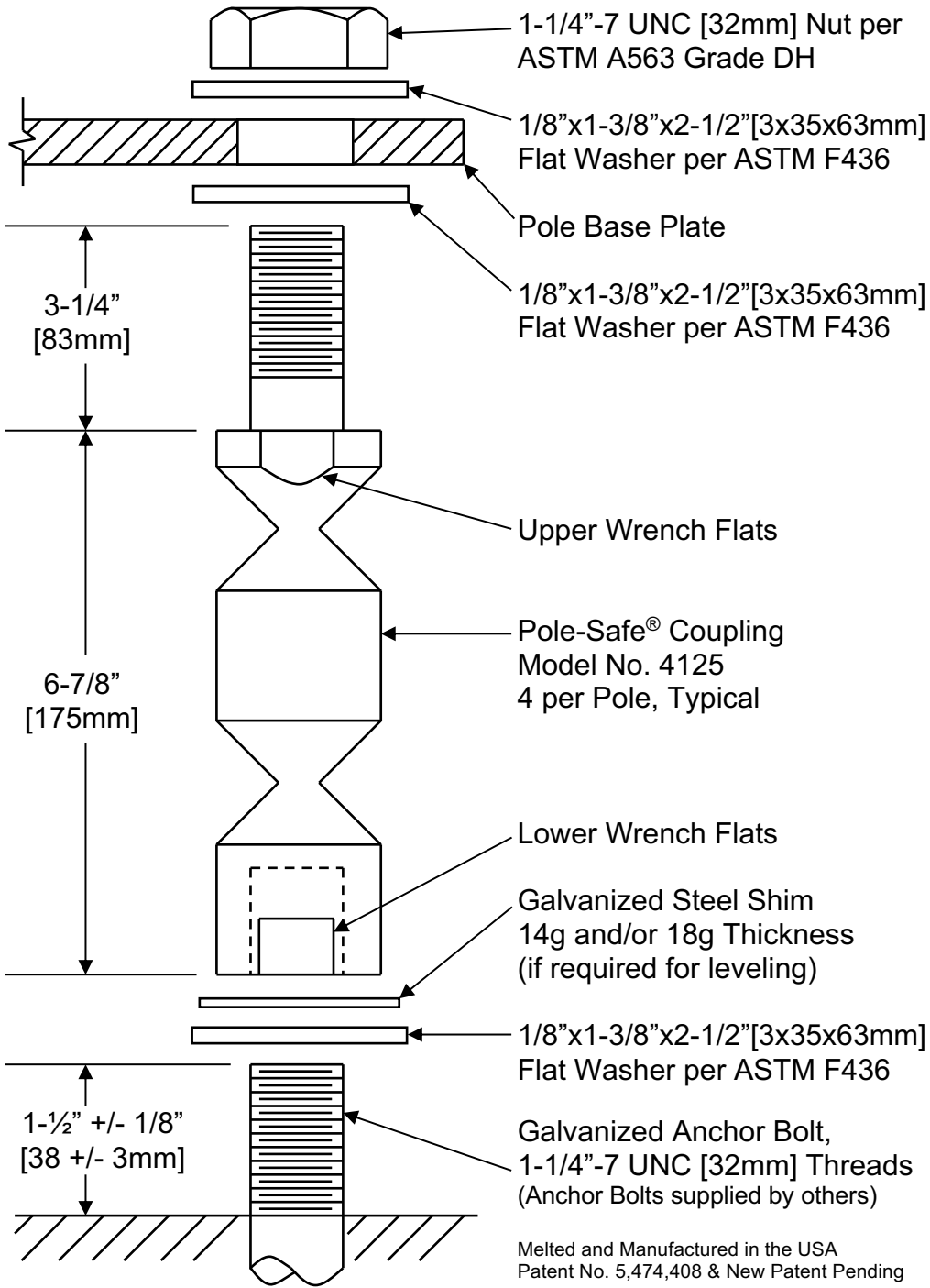
NOTE: Proper Installation is essential for the Pole-Safe Breakaway Support System to function correctly as designed.

1. Surface of foundation around anchor bolts must be smooth, flat and free of debris.
2. Existing anchor bolts MUST be sized to the proper projection height as shown on the reverse side of these instructions. Then, anchor bolts shall be cleaned, and if necessary, coated with cold galvanizing material prior to installing Pole-Safe couplings.
3. Install lower flat washers, and thread Pole-Safe couplings on to anchor bolts.
4. If needed, shims are provided for leveling of the pole base plate and may be installed at the base of the couplings. No more than 2 shims shall be installed on any one coupling. For larger adjustments that may be required, install no more than one additional flat washer under the base plate on the top shank of the coupling(s).
5. Use lower wrench flats to tighten Pole-Safe couplings on to the anchor bolts. Secure couplings as tight as possible using conventional wrenches. Do not use a pipe wrench. Couplings must be seated squarely on the washers, and washers must be seated uniformly on top of the foundation. If necessary, remove coupling and reduce the anchor bolt projection height to allow proper seating of the couplings.
6. Install a flat washer on top of each Pole-Safe coupling and set the pole with base plate on top of the couplings.
7. Install a flat washer and nut on to each Pole-Safe coupling extended through the pole base plate. If pole is not plumb, install shims and/or washers for proper leveling as described in Step 4 above.
8. Tighten each nut on to pole base plate. Pole-Safe couplings must be held with an additional wrench on the upper wrench flats to prevent an induced torque stress across the necked portion of the couplings. Nuts shall be tightened using the turn-of-nut method in accordance with American Institute of Steel Construction (AISC) procedures (for ASTM A325 and A490 anchor bolts, 1/3 rotation past “snug tight”).

Transpo Industries, Inc., 20 Jones Street, New Rochelle, NY 10801-6098
Phone: 914-636-1000

info@transpo.com

www.transpo.com



SPECIFICATIONS

Performance Criteria:

1. Pole-Safe® conforms to AASHTO "Standard Specifications for Structural Supports for Highway Signs, Luminaires and Traffic Signals."
2. Pole-Safe® has been crash-tested and FHWA approved in accordance with the requirements of NCHRP Report 350, "Recommended Procedures for the Safety Performance Evaluation of Highway Features."
3. Maximum Allowable Pole Mass = 930 lb [450 kg] (total, including fixtures).

Physical Properties per Coupling:

1. Ultimate Tensile Strength = 49.8 kips [221.5 kN], minimum
2. Tensile Yield Strength = 43.2 kips [192.0 kN], minimum
3. Ultimate Restrained Shear Strength:
 - 3.8 kips [16.9 kN], minimum
 - 5.5 kips [24.5 kN], maximum

Corrosion Protection:

1. Pole-Safe® couplings, nuts, bolts, and washers are galvanized after fabrication in accordance with ASTM A153. All leveling shims are galvanized after fabrication in accordance with ASTM A653.

1/25

Pole-Safe® Model No. 4125 Breakaway Support System for Light Poles



20 Jones Street
New Rochelle, NY 10801
914-636-1000
www.transpo.com



Pole-Safe® Model No. 4125 Breakaway Support System for Light Poles

INSTALLATION INSTRUCTIONS

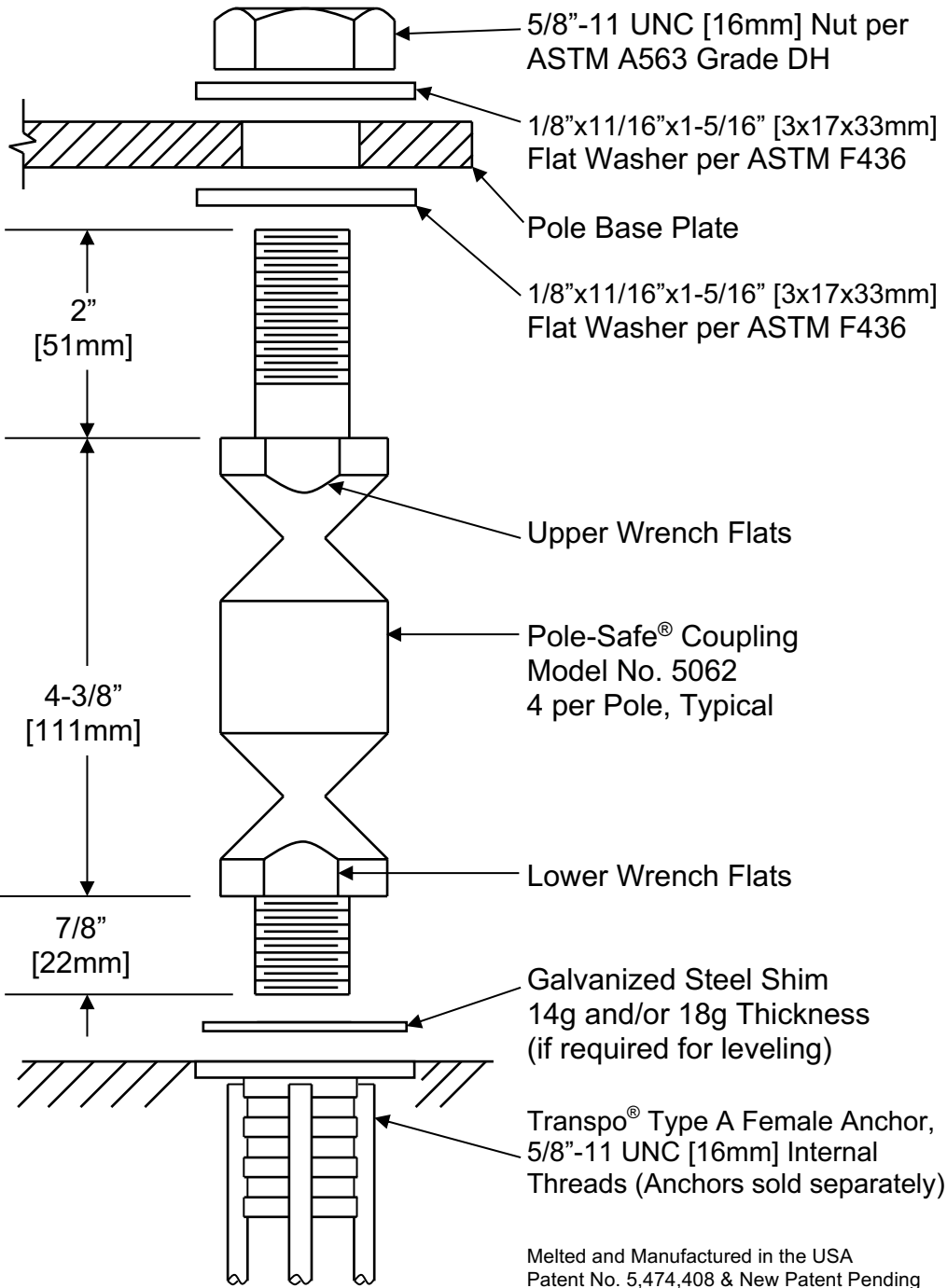
NOTE: Proper Installation is essential for the Pole-Safe Breakaway Support System to function correctly as designed.

1. Surface of foundation around anchor bolts must be smooth, flat and free of debris.
2. Existing anchor bolts MUST be sized to the proper projection height as shown on the reverse side of these instructions. Then, anchor bolts shall be cleaned, and if necessary, coated with cold galvanizing material prior to installing Pole-Safe couplings.
3. Install lower flat washers, and thread Pole-Safe couplings on to anchor bolts.
4. If needed, shims are provided for leveling of the pole base plate and may be installed at the base of the couplings. No more than 2 shims shall be installed on any one coupling. For larger adjustments that may be required, install no more than one additional flat washer under the base plate on the top shank of the coupling(s).
5. Use lower wrench flats to tighten Pole-Safe couplings on to the anchor bolts. Secure couplings as tight as possible using conventional wrenches. Do not use a pipe wrench. Couplings must be seated squarely on the washers, and washers must be seated uniformly on top of the foundation. If necessary, remove coupling and reduce the anchor bolt projection height to allow proper seating of the couplings.
6. Install a flat washer on top of each Pole-Safe coupling and set the pole with base plate on top of the couplings.
7. Install a flat washer and nut on to each Pole-Safe coupling extended through the pole base plate. If pole is not plumb, install shims and/or washers for proper leveling as described in Step 4 above.
8. Tighten each nut on to pole base plate. Pole-Safe couplings must be held with an additional wrench on the upper wrench flats to prevent an induced torque stress across the necked portion of the couplings. Nuts shall be tightened using the turn-of-nut method in accordance with American Institute of Steel Construction (AISC) procedures (for ASTM A325 and A490 anchor bolts, 1/3 rotation past “snug tight”).

Transpo Industries, Inc., 20 Jones Street, New Rochelle, NY 10801-6098
Phone: 914-636-1000

info@transpo.com

www.transpo.com



Melted and Manufactured in the USA
 Patent No. 5,474,408 & New Patent Pending

SPECIFICATIONS

Performance Criteria:

1. Pole-Safe[®] conforms to AASHTO "Standard Specifications for Structural Supports for Highway Signs, Luminaires and Traffic Signals."
2. Pole-Safe[®] has been crash-tested and FHWA approved in accordance with the requirements of NCHRP Report 350, "Recommended Procedures for the Safety Performance Evaluation of Highway Features."

Physical Properties per Coupling:

1. Ultimate Tensile Strength = 22.8 kips [101.9 kN], minimum
2. Tensile Yield Strength = 19.8 kips [88.3 kN], minimum
3. Ultimate Restrained Shear Strength:
 - 1.5 kips [6.6 kN], minimum
 - 2.5 kips [11.1 kN], maximum

Corrosion Protection:

1. Pole-Safe[®] couplings, nuts, bolts, and washers are galvanized after fabrication in accordance with ASTM A153. All leveling shims are galvanized after fabrication in accordance with ASTM A653.

Pole-Safe[®] Model No. 5062 Breakaway Support System for Light Poles



20 Jones Street
 New Rochelle, NY 10801
 914-636-1000
www.transpo.com



Pole-Safe® Model No. 5062 Breakaway Support System for Light Poles

INSTALLATION INSTRUCTIONS

NOTE: Proper Installation is essential for the Pole-Safe Breakaway Support System to function correctly as designed.

Anchor Assembly:

1. Fasten Transpo® Type A Female Anchors to a rigid template prefabricated to match the specified bolt circle.
2. Lower entire anchor assembly into the fresh concrete foundation, and vibrate assembly into place, such that the anchors are in the proper location to match the holes in the pole base plate. Ensure that all anchors are level and that the tops of the individual anchors and the bottom of the template are flush with the finished top surface of the foundation.
3. Allow foundation to fully cure and remove template from the anchors.

Coupling Assembly:

1. Surface of foundation around anchors must be smooth, flat and free of debris.
2. Thread Pole-Safe couplings into Transpo® Type A Female Anchors.
3. If needed, shims are provided for leveling of the pole base plate and may be installed at the base of the coupling(s). No more than 2 shims shall be installed on any one coupling. For larger adjustments that may be required, install no more than one additional flat washer under the base plate on the top shank of the coupling(s).
4. Use lower wrench flats to tighten Pole-Safe couplings into the anchors. Secure couplings as tight as possible using conventional wrenches. Do not use a pipe wrench. Couplings must be seated squarely on top of the anchors.
5. Install a flat washer on top of each Pole-Safe coupling and set the pole with base plate on top of the couplings.
6. Install a flat washer and nut on to each Pole-Safe coupling extended through the pole base plate. If pole is not plumb, install shims and/or washers for proper leveling as described in Step 3 above.
7. Tighten each nut on to pole base plate. Pole-Safe couplings must be held with an additional wrench on the upper wrench flats to prevent an induced torque stress across the necked portion of the couplings. Nuts shall be tightened using the turn-of-nut method in accordance with American Institute of Steel Construction (AISC) procedures (1/3 rotation past “snug tight”).

Transpo Industries, Inc., 20 Jones Street, New Rochelle, NY 10801-6098

Phone: 914-636-1000

info@transpo.com

www.transpo.com

SPECIFICATIONS

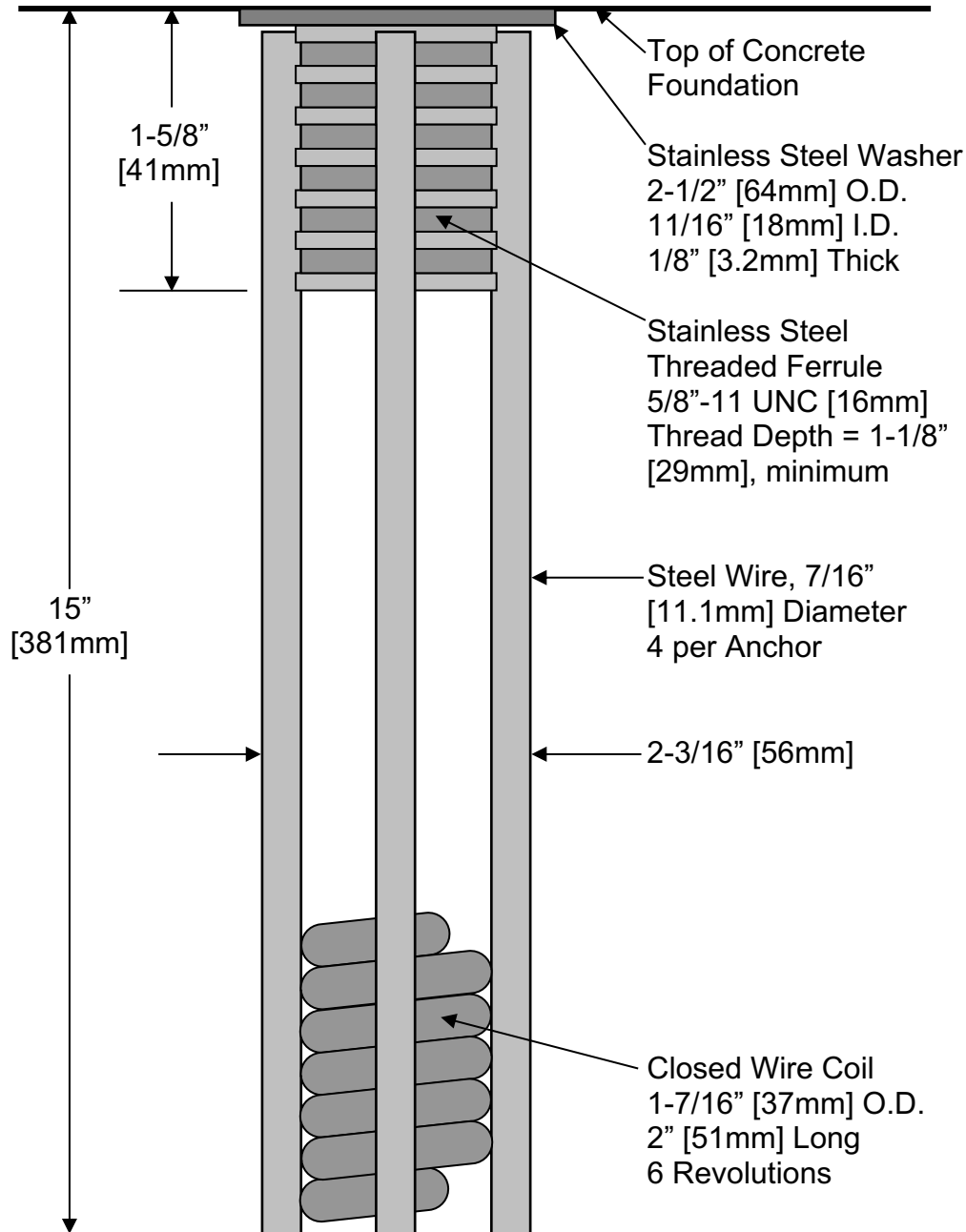
Physical Properties:

1. Ultimate Tensile Load = 60.0 kips [267 kN], minimum per Anchor.
2. Actual Pullout Strength depends on foundation design and concrete properties.

Installation Instructions:

See other side of page for typical installation diagrams.

1. Fabricate flat steel or wood template with four (4) 5/8" [16mm] diameter holes located to match the specified bolt pattern of the pole base plate.
2. Attach four (4) Pole-Safe® Type A Female Anchors to template using four (4) 5/8" [16mm] diameter bolts. Ensure that each Anchor Washer is flush and snug against the bottom of the template.
3. Lower Anchor Assembly into fresh concrete foundation and vibrate into position such that the tops of the Anchor Washers are flush with the finished top surface of the foundation.
4. Support template such that all Anchors are level and in their proper locations.
5. Allow concrete to cure, and then remove bolts and template from the top of the foundation.



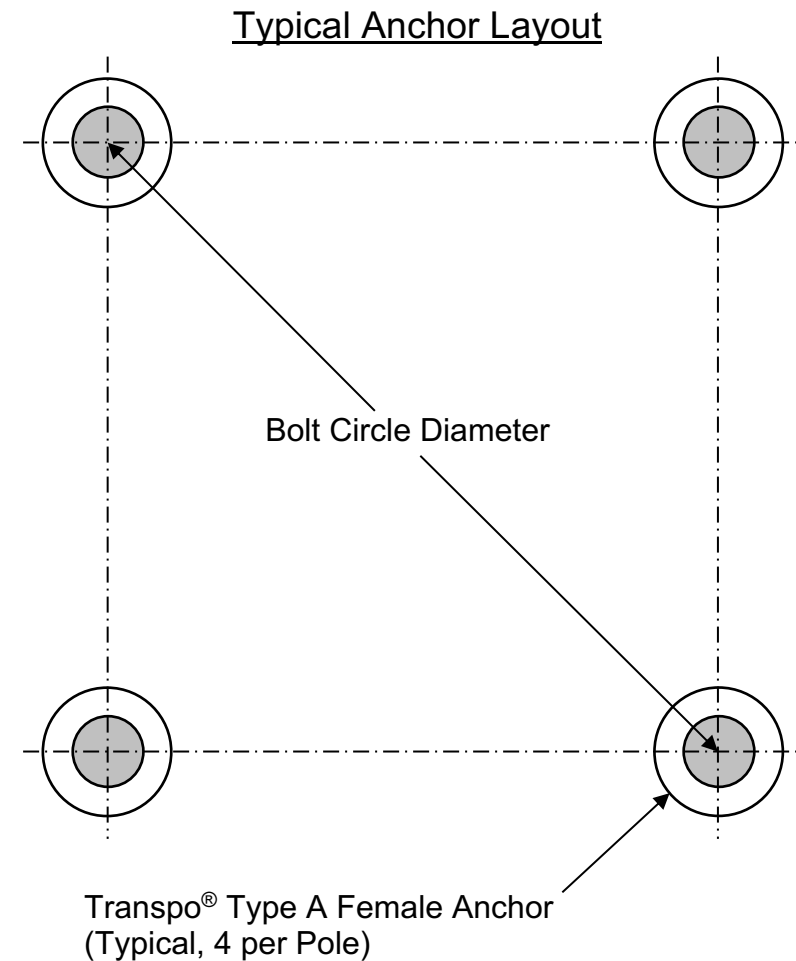
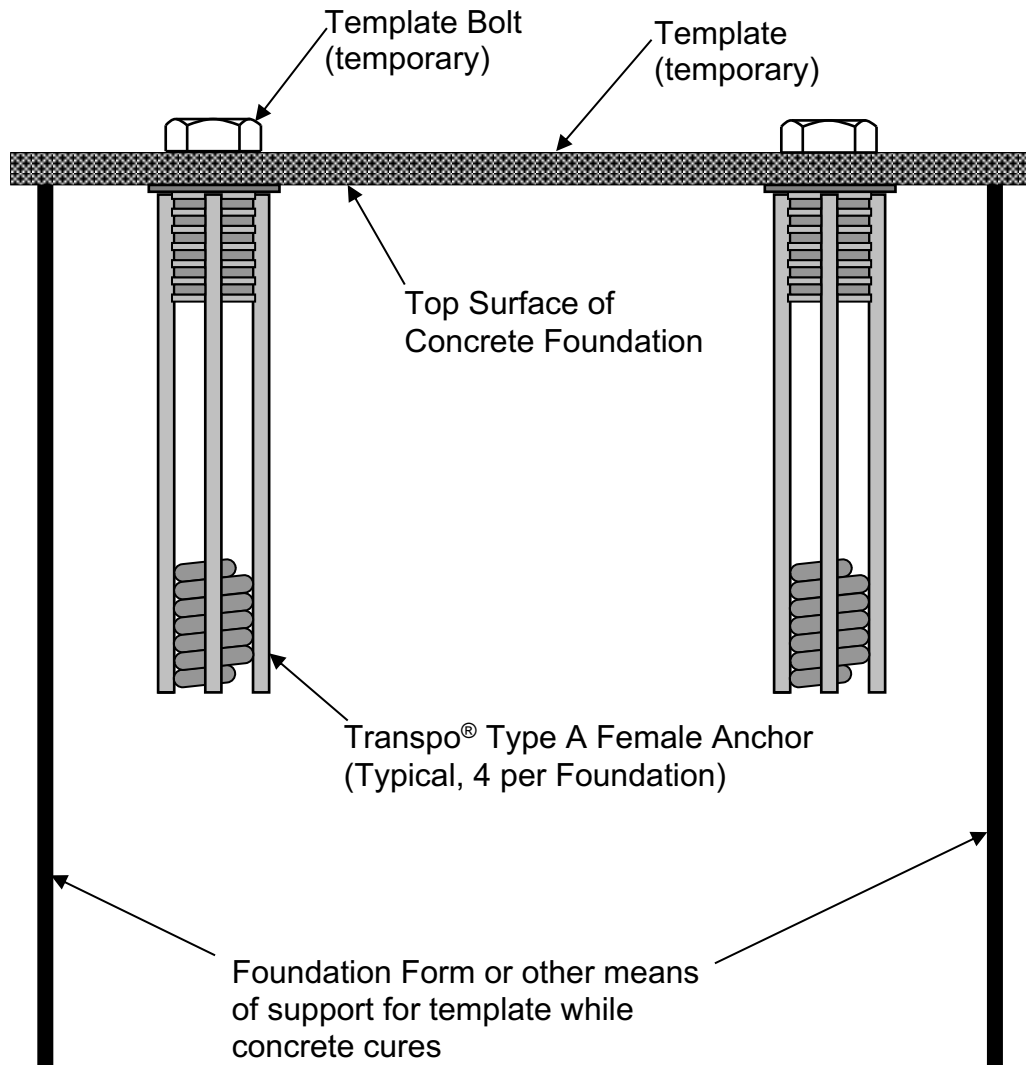
Melted and Manufactured in the USA

1/25

TRANSPO[®]
INDUSTRIES, INC.

20 Jones Street
New Rochelle, NY 10801
914-636-1000
www.transpo.com

Transpo® Type A Female Anchor
for use with Pole-Safe® Model 5062
Breakaway Support System for Light Poles

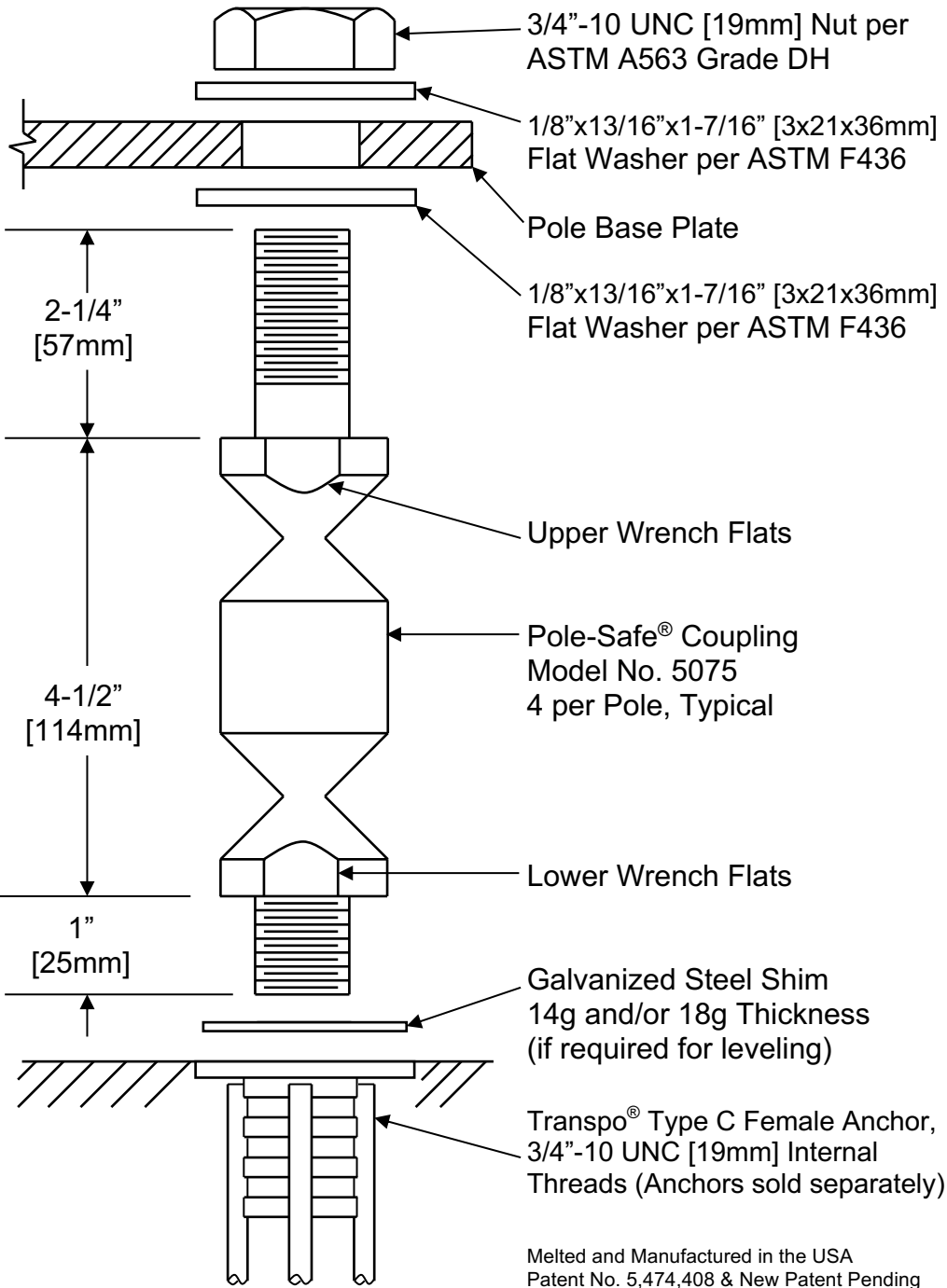


See other side of page for complete
Installation Instructions

Transpo® Type A Female Anchor
for use with Pole-Safe® Model 5062
Breakaway Support System for Light Poles

TRANSPO®
INDUSTRIES, INC.

20 Jones Street
New Rochelle, NY 10801
914-636-1000
www.transpo.com



3/4"-10 UNC [19mm] Nut per ASTM A563 Grade DH

1/8"x13/16"x1-7/16" [3x21x36mm] Flat Washer per ASTM F436

Pole Base Plate

1/8"x13/16"x1-7/16" [3x21x36mm] Flat Washer per ASTM F436

2-1/4" [57mm]

Upper Wrench Flats

Pole-Safe® Coupling Model No. 5075
4 per Pole, Typical

4-1/2" [114mm]

Lower Wrench Flats

1" [25mm]

Galvanized Steel Shim 14g and/or 18g Thickness (if required for leveling)

Transpo® Type C Female Anchor, 3/4"-10 UNC [19mm] Internal Threads (Anchors sold separately)

Melted and Manufactured in the USA
Patent No. 5,474,408 & New Patent Pending

SPECIFICATIONS

Performance Criteria:

1. Pole-Safe® conforms to AASHTO "Standard Specifications for Structural Supports for Highway Signs, Luminaires and Traffic Signals."
2. Pole-Safe® has been crash-tested and FHWA approved in accordance with the requirements of NCHRP Report 350, "Recommended Procedures for the Safety Performance Evaluation of Highway Features."

Physical Properties per Coupling:

1. Ultimate Tensile Strength = 29.4 kips [131.0 kN], minimum
2. Tensile Yield Strength = 25.5 kips [113.6 kN], minimum
3. Ultimate Restrained Shear Strength:
 - 2.0 kips [8.9 kN], minimum
 - 3.0 kips [13.3 kN], maximum

Corrosion Protection:

1. Pole-Safe® couplings, nuts, bolts, and washers are galvanized after fabrication in accordance with ASTM A153. All leveling shims are galvanized after fabrication in accordance with ASTM A653.

Pole-Safe® Model No. 5075
Breakaway Support System for Light Poles



20 Jones Street
New Rochelle, NY 10801
914-636-1000
www.transpo.com



Pole-Safe® Model No. 5075 Breakaway Support System for Light Poles

INSTALLATION INSTRUCTIONS

NOTE: Proper Installation is essential for the Pole-Safe Breakaway Support System to function correctly as designed.

Anchor Assembly:

1. Fasten Transpo® Type C Female Anchors to a rigid template prefabricated to match the specified bolt circle.
2. Lower entire anchor assembly into the fresh concrete foundation, and vibrate assembly into place, such that the anchors are in the proper location to match the holes in the pole base plate. Ensure that all anchors are level and that the tops of the individual anchors and the bottom of the template are flush with the finished top surface of the foundation.
3. Allow foundation to fully cure and remove template from the anchors.

Coupling Assembly:

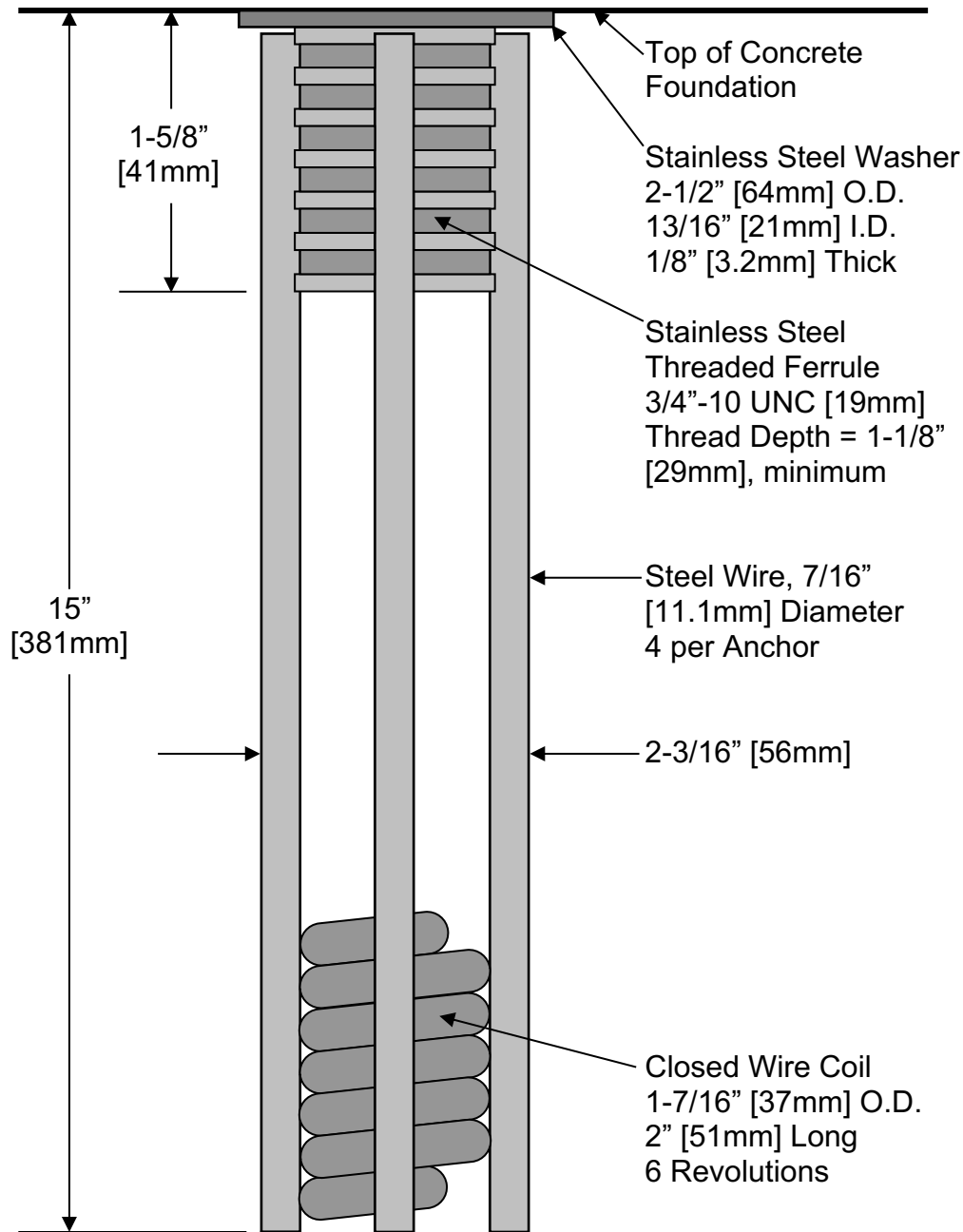
1. Surface of foundation around anchors must be smooth, flat and free of debris.
2. Thread Pole-Safe couplings into Transpo® Type C Female Anchors.
3. If needed, shims are provided for leveling of the pole base plate and may be installed at the base of the coupling(s). No more than 2 shims shall be installed on any one coupling. For larger adjustments that may be required, install no more than one additional flat washer under the base plate on the top shank of the coupling(s).
4. Use lower wrench flats to tighten Pole-Safe couplings into the anchors. Secure couplings as tight as possible using conventional wrenches. Do not use a pipe wrench. Couplings must be seated squarely on top of the anchors.
5. Install a flat washer on top of each Pole-Safe coupling and set the pole with base plate on top of the couplings.
6. Install a flat washer and nut on to each Pole-Safe coupling extended through the pole base plate. If pole is not plumb, install shims and/or washers for proper leveling as described in Step 3 above.
7. Tighten each nut on to pole base plate. Pole-Safe couplings must be held with an additional wrench on the upper wrench flats to prevent an induced torque stress across the necked portion of the couplings. Nuts shall be tightened using the turn-of-nut method in accordance with American Institute of Steel Construction (AISC) procedures (1/3 rotation past "snug tight").

Transpo Industries, Inc., 20 Jones Street, New Rochelle, NY 10801-6098

Phone: 914-636-1000

info@transpo.com

www.transpo.com



Melted and Manufactured in the USA

1/25

SPECIFICATIONS

Physical Properties:

1. Ultimate Tensile Load = 60.0 kips [267 kN], minimum per Anchor.
2. Actual Pullout Strength depends on foundation design and concrete properties.

Installation Instructions:

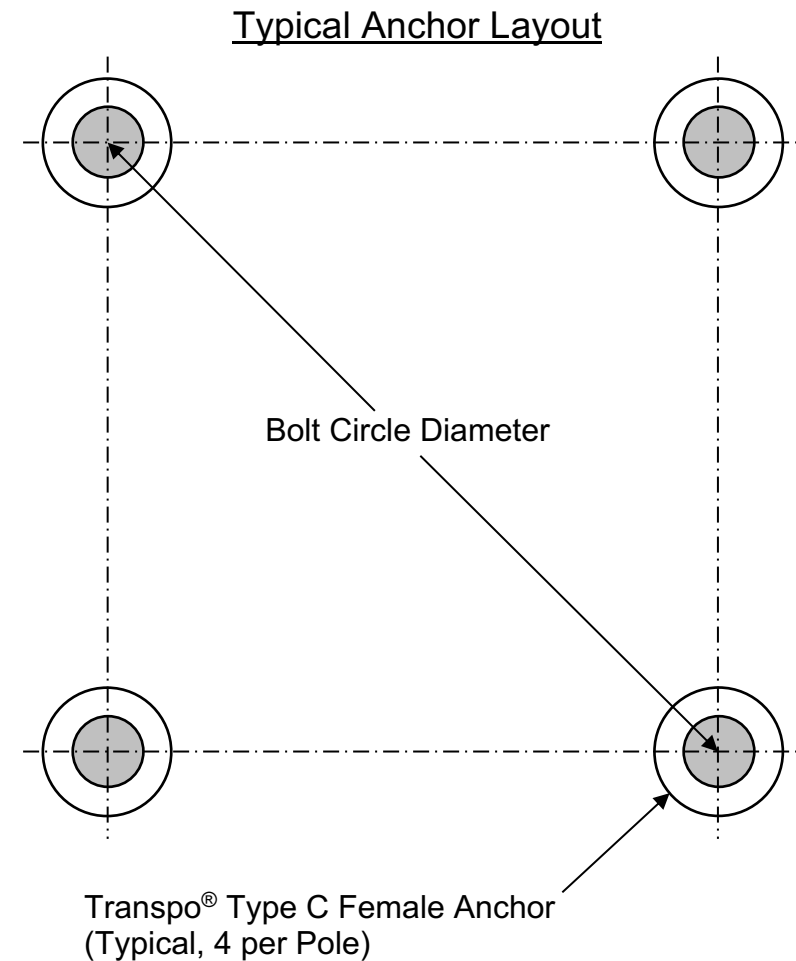
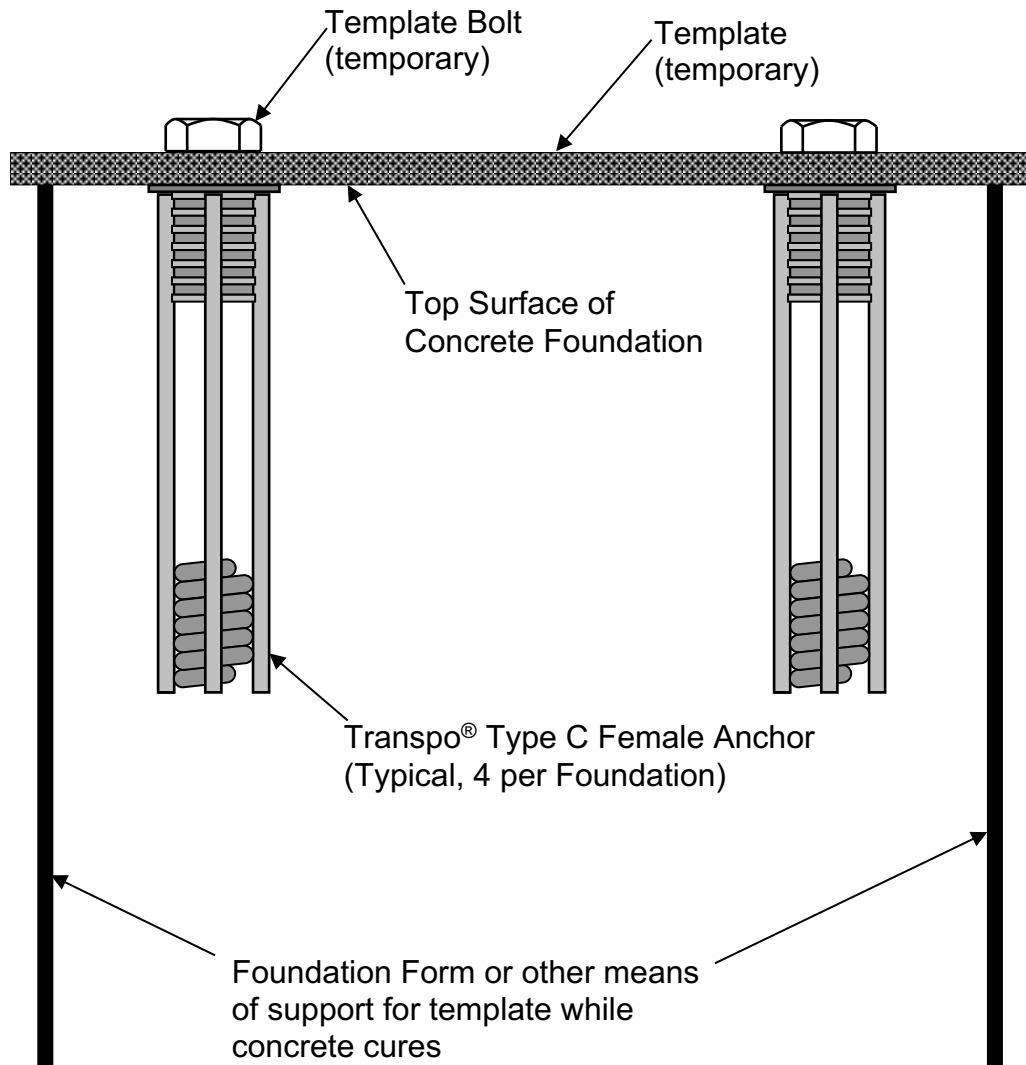
See other side of page for typical installation diagrams.

1. Fabricate flat steel or wood template with four (4) 3/4" [19mm] diameter holes located to match the specified bolt pattern of the pole base plate.
2. Attach four (4) Pole-Safe® Type B Female Anchors to template using four (4) 3/4" [19mm] diameter bolts. Ensure that each Anchor Washer is flush and snug against the bottom of the template.
3. Lower Anchor Assembly into fresh concrete foundation and vibrate into position such that the tops of the Anchor Washers are flush with the finished top surface of the foundation.
4. Support template such that all Anchors are level and in their proper locations.
5. Allow concrete to cure, and then remove bolts and template from the top of the foundation.

Transpo® Type C Female Anchor
for use with Pole-Safe® Model 5075
Breakaway Support System for Light Poles

TRANSPO
INDUSTRIES, INC.

20 Jones Street
New Rochelle, NY 10801
914-636-1000
www.transpo.com

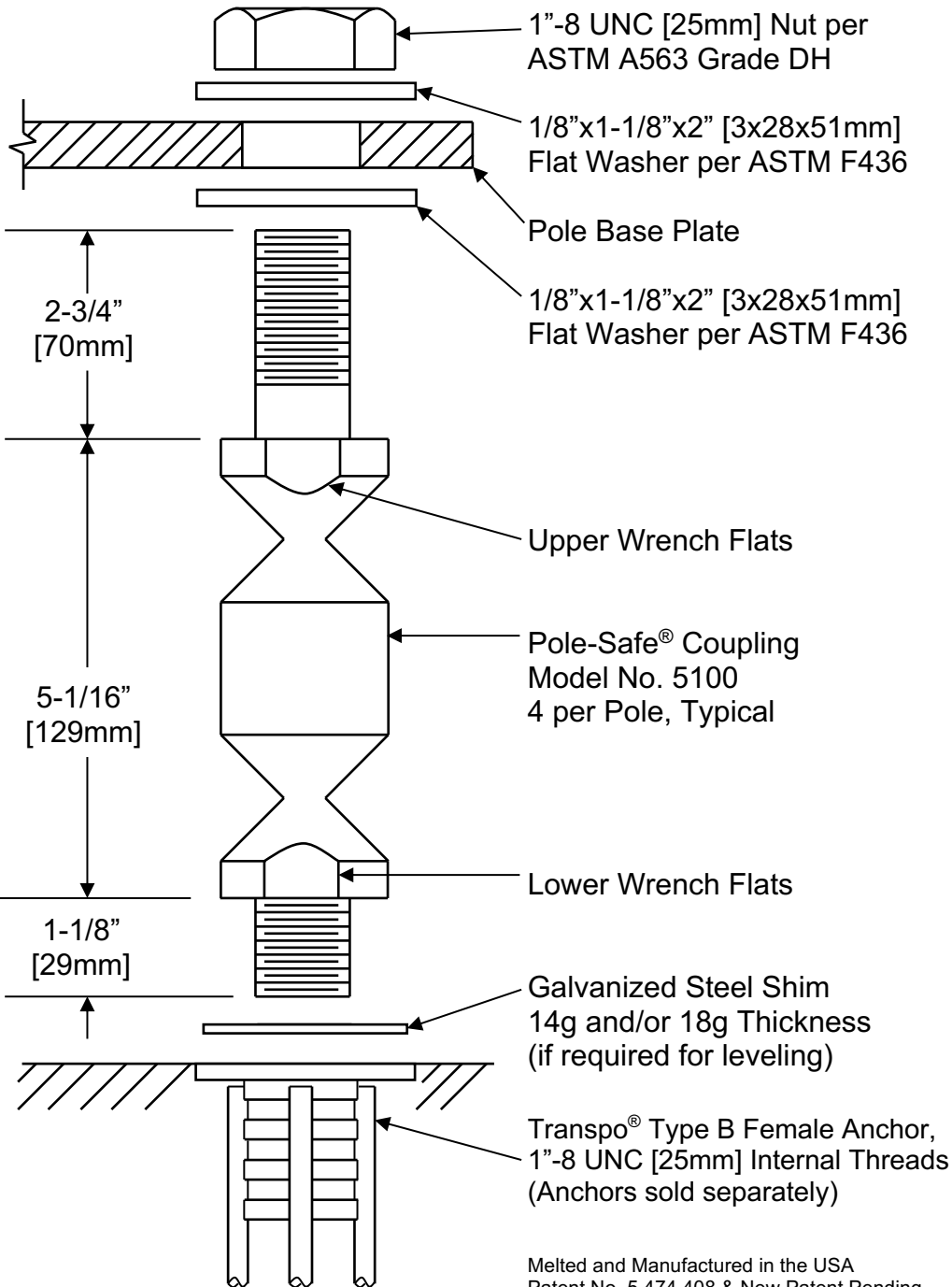


See other side of page for complete
Installation Instructions

Transpo® Type C Female Anchor
for use with Pole-Safe® Model 5075
Breakaway Support System for Light Poles



20 Jones Street
New Rochelle, NY 10801
914-636-1000
www.transpo.com



Melted and Manufactured in the USA
Patent No. 5,474,408 & New Patent Pending

SPECIFICATIONS

Performance Criteria:

1. Pole-Safe® conforms to AASHTO "Standard Specifications for Structural Supports for Highway Signs, Luminaires and Traffic Signals."
2. Pole-Safe® has been crash-tested and FHWA approved in accordance with the requirements of NCHRP Report 350, "Recommended Procedures for the Safety Performance Evaluation of Highway Features."
3. Maximum Allowable Pole Mass = 930 lb [423kg] (total, including fixtures)

Physical Properties per Coupling:

1. Ultimate Tensile Strength = 49.8 kips [221.5 kN], minimum
2. Tensile Yield Strength = 43.2 kips [192.0 kN], minimum
3. Ultimate Restrained Shear Strength:
 - 3.8 kips [16.9 kN], minimum
 - 5.5 kips [24.4 kN], maximum

Corrosion Protection:

1. Pole-Safe® couplings, nuts, bolts, and washers are galvanized after fabrication in accordance with ASTM A153. All leveling shims are galvanized after fabrication in accordance with ASTM A653.

1/25

Pole-Safe® Model No. 5100 Breakaway Support System for Light Poles

TRANSPO[®]
INDUSTRIES, INC.

20 Jones Street
New Rochelle, NY 10801
914-636-1000

www.transpo.com



Pole-Safe® Model No. 5100 Breakaway Support System for Light Poles

INSTALLATION INSTRUCTIONS

NOTE: Proper Installation is essential for the Pole-Safe Breakaway Support System to function correctly as designed.

Anchor Assembly:

1. Fasten Transpo® Type B Female Anchors to a rigid template prefabricated to match the specified bolt circle.
2. Lower entire anchor assembly into the fresh concrete foundation, and vibrate assembly into place, such that the anchors are in the proper location to match the holes in the pole base plate. Ensure that all anchors are level and that the tops of the individual anchors and the bottom of the template are flush with the finished top surface of the foundation.
3. Allow foundation to fully cure and remove template from the anchors.

Coupling Assembly:

1. Surface of foundation around anchors must be smooth, flat and free of debris.
2. Thread Pole-Safe couplings into Transpo® Type B Female Anchors.
3. If needed, shims are provided for leveling of the pole base plate and may be installed at the base of the coupling(s). No more than 2 shims shall be installed on any one coupling. For larger adjustments that may be required, install no more than one additional flat washer under the base plate on the top shank of the coupling(s).
4. Use lower wrench flats to tighten Pole-Safe couplings into the anchors. Secure couplings as tight as possible using conventional wrenches. Do not use a pipe wrench. Couplings must be seated squarely on top of the anchors.
5. Install a flat washer on top of each Pole-Safe coupling and set the pole with base plate on top of the couplings.
6. Install a flat washer and nut on to each Pole-Safe coupling extended through the pole base plate. If pole is not plumb, install shims and/or washers for proper leveling as described in Step 3 above.
7. Tighten each nut on to pole base plate. Pole-Safe couplings must be held with an additional wrench on the upper wrench flats to prevent an induced torque stress across the necked portion of the couplings. Nuts shall be tightened using the turn-of-nut method in accordance with American Institute of Steel Construction (AISC) procedures (1/3 rotation past “snug tight”).

Transpo Industries, Inc., 20 Jones Street, New Rochelle, NY 10801-6098

Phone: 914-636-1000

info@transpo.com

www.transpo.com

SPECIFICATIONS

Physical Properties:

1. Ultimate Tensile Load = 60.0 kips [267 kN], minimum per Anchor.
2. Actual Pullout Strength depends on foundation design and concrete properties.

Installation Instructions:

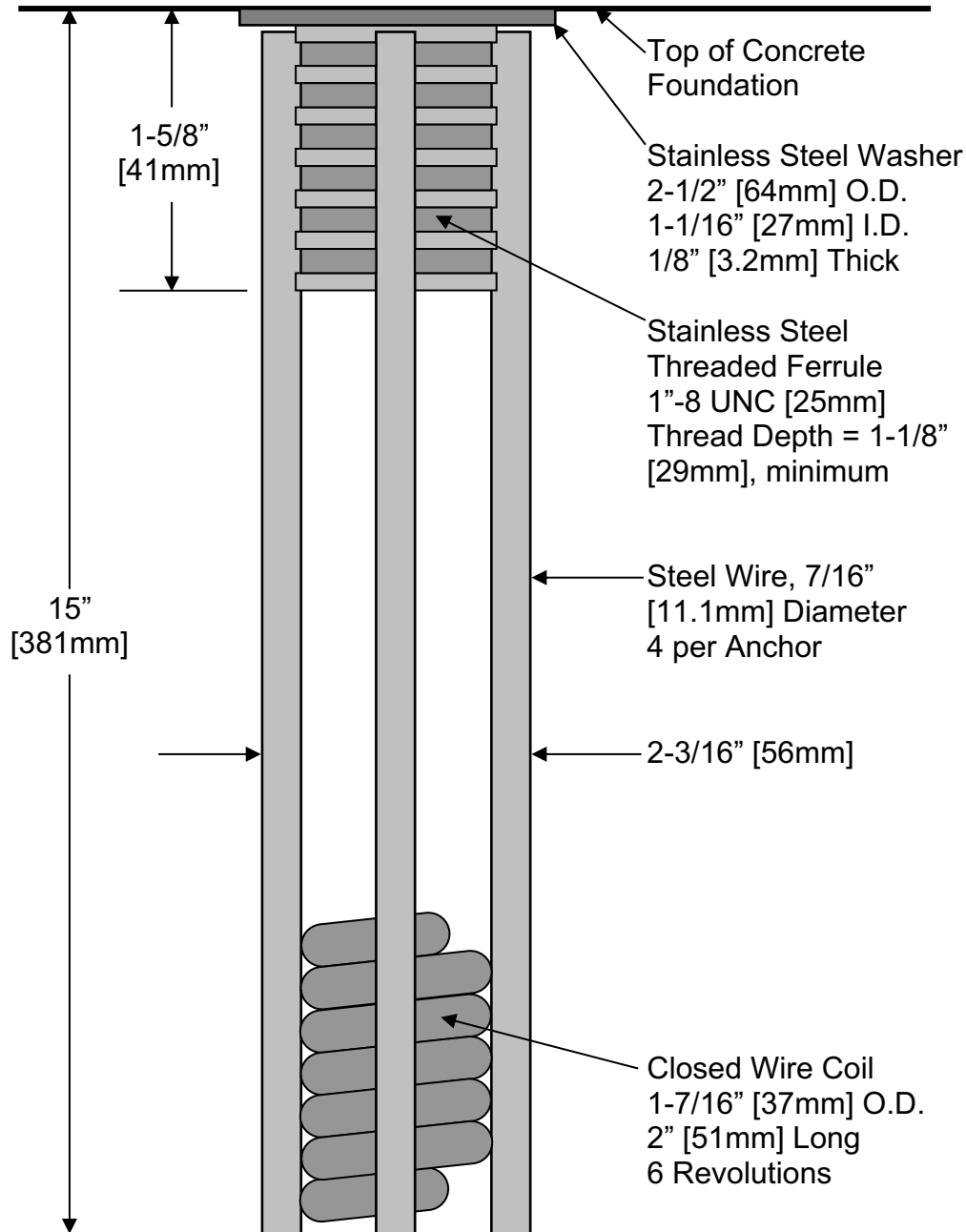
See other side of page for typical installation diagrams.

1. Fabricate flat steel or wood template with four (4) 1" [25mm] diameter holes located to match the specified bolt pattern of the pole base plate.
2. Attach four (4) Pole-Safe® Type B Female Anchors to template using four (4) 1" [25mm] diameter bolts. Ensure that each Anchor Washer is flush and snug against the bottom of the template.
3. Lower Anchor Assembly into fresh concrete foundation and vibrate into position such that the tops of the Anchor Washers are flush with the finished top surface of the foundation.
4. Support template such that all Anchors are level and in their proper locations.
5. Allow concrete to cure, and then remove bolts and template from the top of the foundation.

Transpo® Type B Female Anchor
for use with Pole-Safe® Models 5100 & 5125
Breakaway Support System for Light Poles

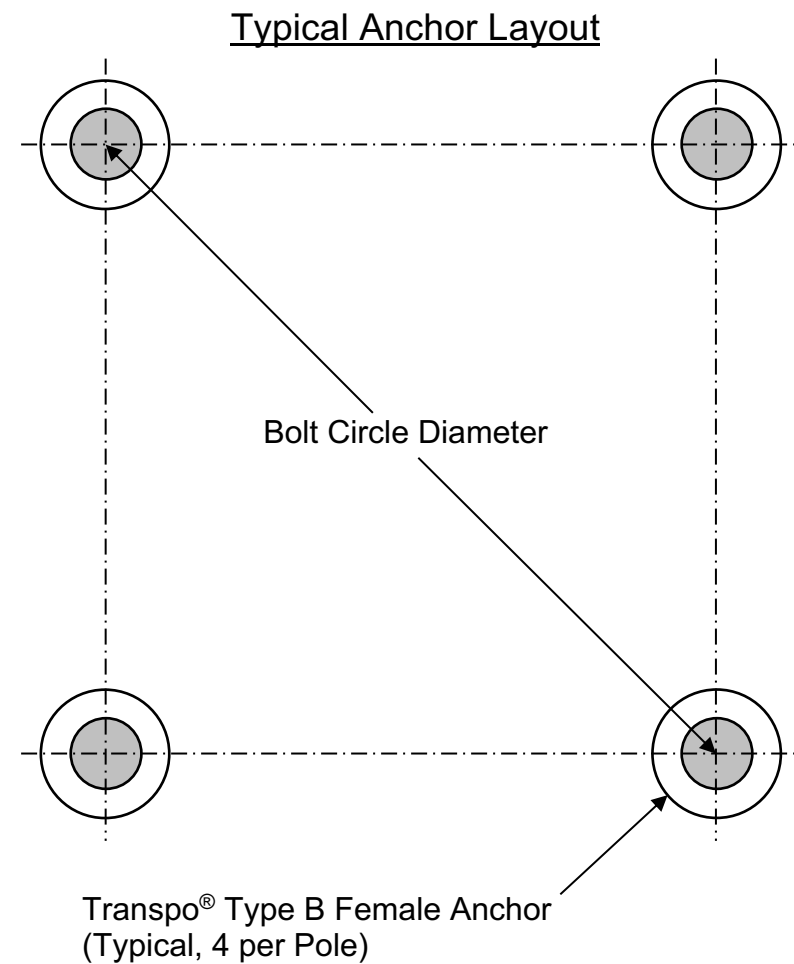
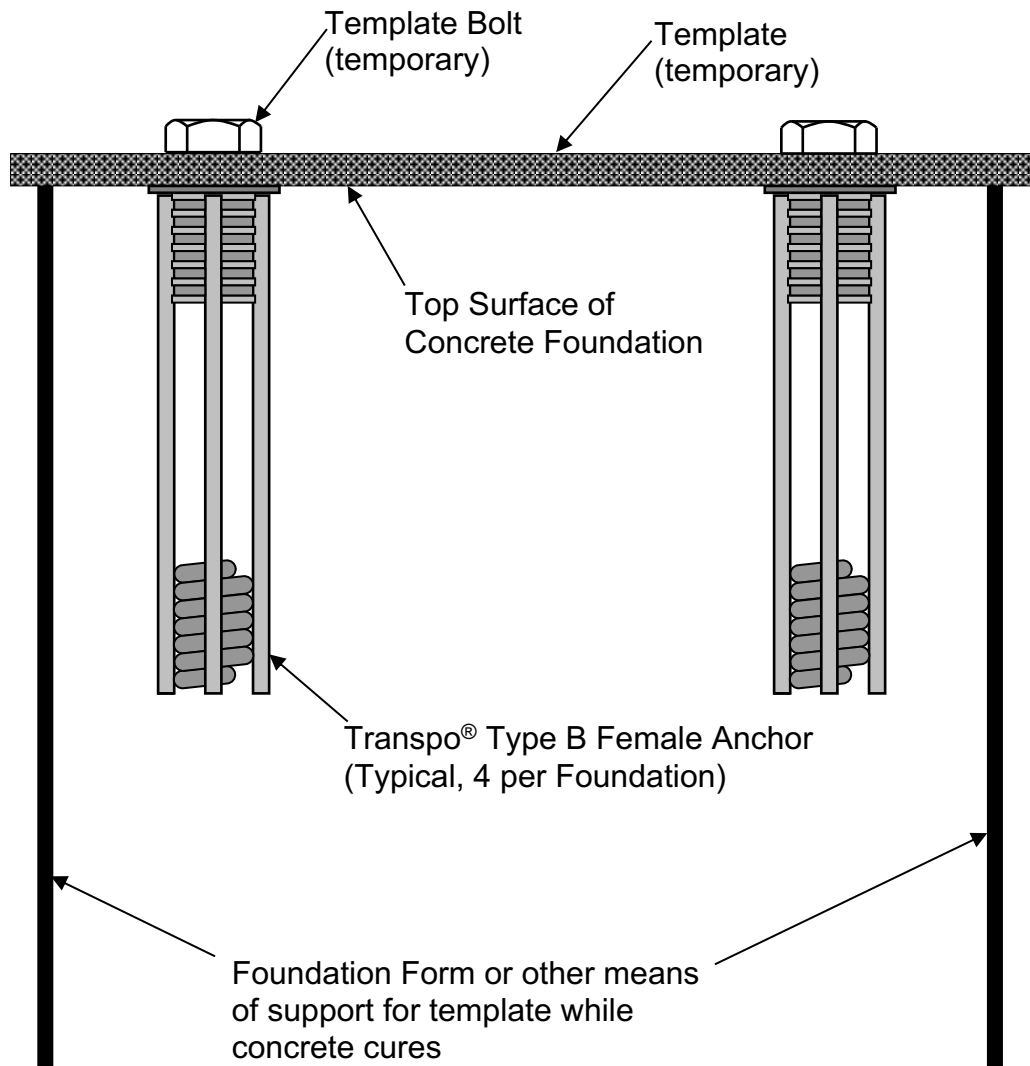


20 Jones Street
New Rochelle, NY 10801
914-636-1000
www.transpo.com



Melted and Manufactured in the USA

1/25

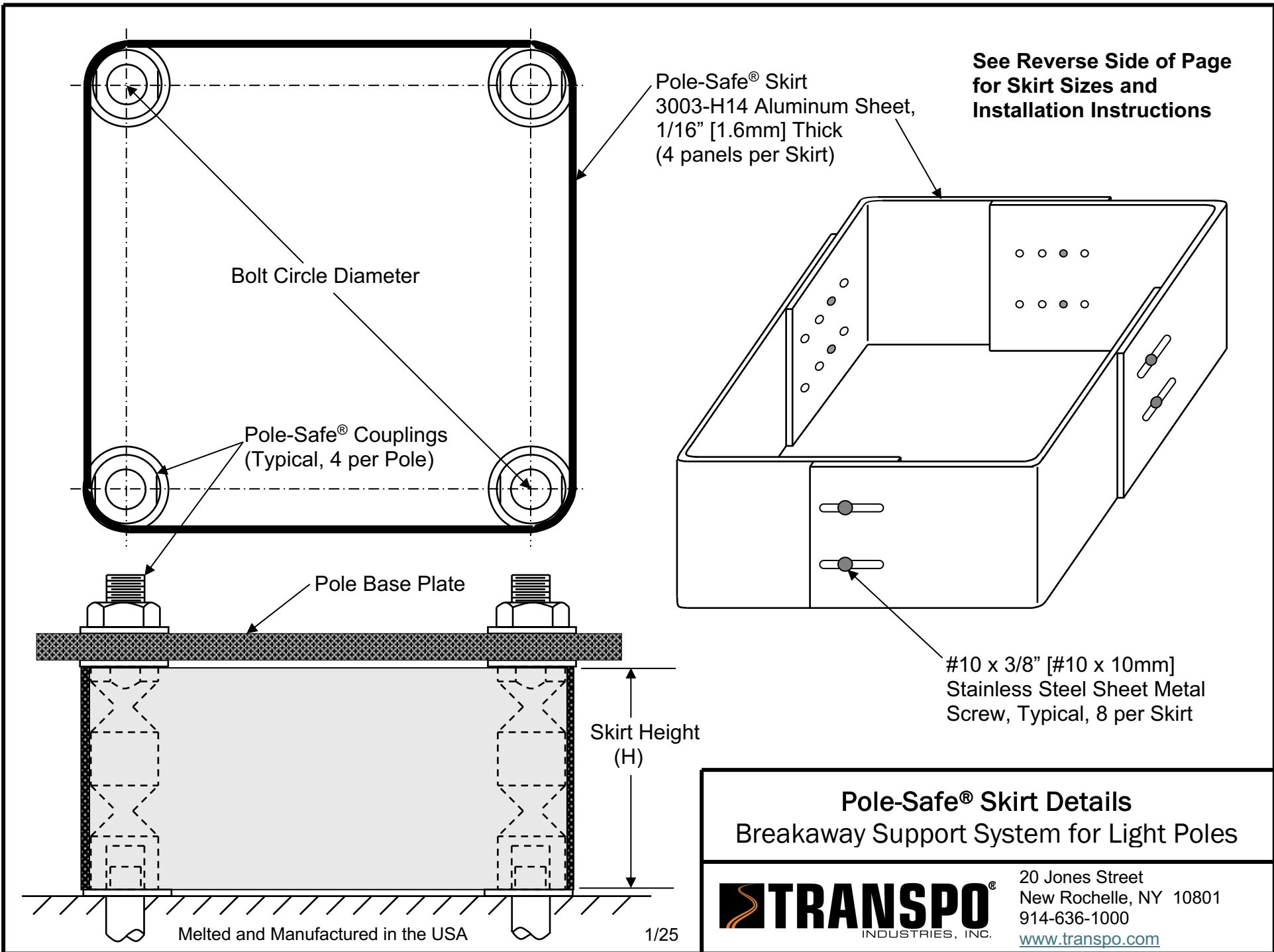


See other side of page for complete Installation Instructions

Transpo® Type B Female Anchor
 for use with Pole-Safe® Models 5100 & 5125
 Breakaway Support System for Light Poles



20 Jones Street
 New Rochelle, NY 10801
 914-636-1000
www.transpo.com



Pole-Safe® Skirt Details
 Breakaway Support System for Light Poles



20 Jones Street
 New Rochelle, NY 10801
 914-636-1000
www.transpo.com



Pole-Safe®
Breakaway Support System for Light Poles

SKIRT INFORMATION

Selection Table:

Pole-Safe® Model No.	Bolt Circle Diameter		Skirt Height (H) inches [mm]
	10" to 15" [254 to 380mm] Skirt Part No.	15" to 20" [380 to 500mm] Skirt Part No.	
4050	SPMKDN-4	SPMKDN-4L	5-3/4" [146]
4062	SPMKDN-4	SPMKDN-4L	5-3/4" [146]
4075	SPMKDN-4	SPMKDN-4L	5-3/4" [146]
4100	SPMKDN-5	SPMKDN-5L	6-5/8" [168]
4125	SPMKDN-5	SPMKDN-5L	6-5/8" [168]
5062	SPMKDN-1	SPMKDN-1L	4-1/4" [108]
5075	SPMKDN-1	SPMKDN-1L	4-1/4" [108]
5100	SPMKDN-2	SPMKDN-2L	5" [127]
5125	SPMKDN-3	SPMKDN-3L	5-1/4" [133]

Installation Instructions:

1. Place 4 skirt panels around Pole-Safe Couplings using overlap configuration shown on reverse side of page. All 4 sides of the skirt box should have 2 slots facing outside.
2. Thread 8 sheet metal screws through the outside slots into the closest corresponding holes in the adjacent inside panel.
3. Position panels snug against the Pole-Safe Couplings.
4. Tighten all 8 sheet metal screws.

Transpo Industries, Inc., 20 Jones Street, New Rochelle, NY 10801-6098
Phone: 914-636-1000

info@transpo.com www.transpo.com