



Transpo Industries manufactures a variety of innovative products and materials designed for improving road safety and bridge preservation. The company's reputation as an expert in rehabilitation, preservation and safety has made Transpo a leading supplier since 1968.

transpo.com

T-17 Airport

POLYMER CONCRETE PATCH

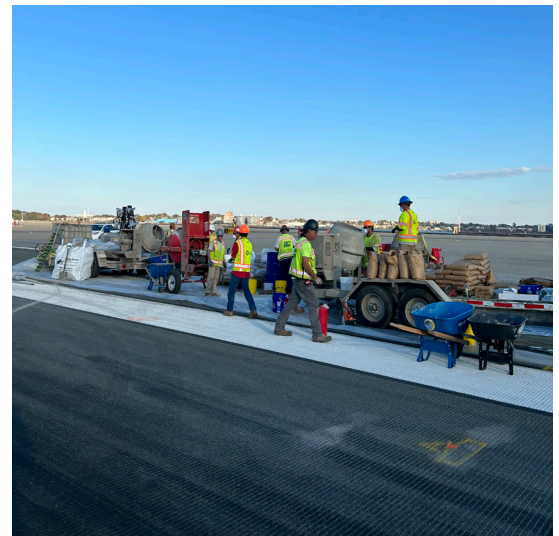
Rapid Runway Repair

T-17 is used at airports nationwide for fast, permanent repairs on runways, taxiways, aprons, and hangars—minimizing the cost and disruption of emergency work.

T-17 offers a fast, simple, and cost-effective solution for repairing runway spalling and edge cracking. Unlike water-based materials, T-17 uses 100% polymer MMA resin, making it highly workable, non-shrinking, and fully cured in less than one hour.

Features and Advantages

- Wide Application Temperature Range (14-100°F)
- Fast Setting (45 min at 70°F)
- High Early Strength (5,000 psi, minimum @ 90 min)
- Strong Chemical Bond (no cold joints)
- Freeze-Thaw Resistant



Airport runways are repaired quickly with T-17 Polymer Concrete Patch.



SAFER TRANSPORTATION THROUGH INNOVATION

T-17 Airport

Application Process

T-17 requires no special tools or equipment. It can be used as a neat mortar for grouting or thin patches, or with prepackaged coarse aggregate for partial and full-depth repairs in a single pour. A thin prime and coat enhances bond strength to the existing concrete, and its rapid cure time ensures a quick return to service.

Applications

T-17 is designed for versatile use across airfield infrastructure, providing reliable solutions that restore concrete integrity and minimize operational downtime.

- Runways and Taxiways
- Hangars & Aprons
- Garage Parking Decks

Airports nationwide rely on T-17 to maintain runway integrity and performance. Examples of airports currently using T-17 include:

- DTA, Detroit, MI
- DFW, Dallas Fort Work, TX
- LGA, Queens, NY
- JFK, Queens, NY
- EWR, Newark, NJ
- DAL, Dallas, TX
- ORL, Orlando, FL

T-17 is superior to other materials that crack, soften, debond, and require frequent replacement.



Need More Information?

[TRANSPO.COM/MATERIALS](https://www.transpo.com/materials)

Contact the materials experts at Transpo to find out more about the various products we offer. If you need advice on how to install the product, the professionals at Transpo will guide you through the process. Project specific questions? We can assist you in creating a cost-effective, tailored solution for your project.

Transpo Industries
20 Jones Street
New Rochelle, NY 10801

914.636.1000
800.321.7870
info@transpo.com



Manufactured By:

