



Transpo Industries manufactures a variety of innovative products and materials designed for improving road safety and bridge preservation. The company's reputation as an expert in rehabilitation, preservation and safety has made Transpo a leading supplier since 1968.



transpo.com

T-17

POLYMER CONCRETE

Extends Life of Concrete Structures

Transpo's T-17 methyl methacrylate polymer concrete is a pre-packaged, two component, 100% reactive material system. T-17 is designed for use on new construction and rehabilitation of bridge decks, expansion joints, bearing pads, and other concrete structures.

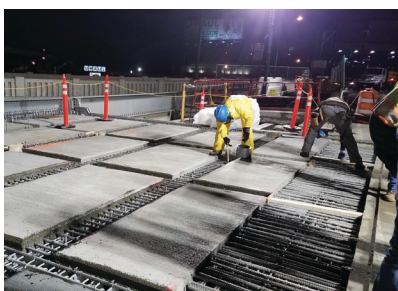
T-17 is easy to handle in all working conditions, and requires no special equipment. Unlike cementitious based materials, T-17 cures in less than one hour, assuring a quick return to service.

Features and Advantages

- Wide Application Temperature Range: 14 - 100°F (-10 - 38°C)
- Fast Setting: 45 min. at 70°F (21°C) or 90 min. at 14°F (-10°C)
- Applications from 0.5 in (13mm) to in excess of 12 in (300mm)
- High Early Strength
- Strong Chemical Bond (no cold joints)
- Chemical and UV Light Resistant
- Freeze-Thaw Resistant
- Waterproof
- No Special Tools or Equipment Needed
- Low Shrinkage



Partial or full depth applications can be accomplished in a single pour, restoring the integrity of deteriorated PCC structures.



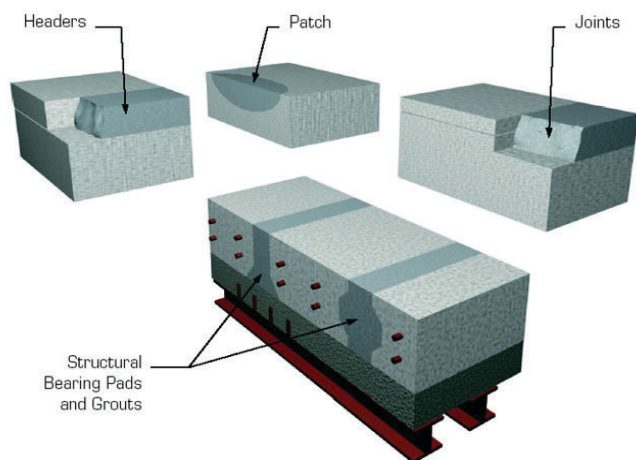
T-17

POLYMER CONCRETE

Applications

Because of its high strength, chemical resistance, and rapid cure, T-17 can be used for repairs and rehabilitation of numerous concrete structures including:

- Concrete Bridge Decks
- Concrete Spall Repair
- Precast Bridge Deck Closure Pores
- Structural Grouting
- Expansion Joint Headers
- Structural Bearing Pads
- Load Transfer Devices
- Concrete Airport Runway Repair
- Parking Deck Patch and Repair
- Horizontal Concrete Surfaces, on grade, above and below grade.



Testing has shown T-17 can be considered an alternative to UHPC



Need more information?

[TRANSPO.COM/MATERIALS](https://www.transpo.com/materials)

Contact the materials experts at Transpo to find out more about the various products we offer. If you need advice on how to install the product, the professionals at Transpo will guide you through the process. Project specific questions? We can assist you in creating a cost-effective, tailored solution for your project



Transpo Industries
 20 Jones Street
 New Rochelle, NY 10801

914.636.1000
 800.321.7870
 info@transpo.com

Manufactured By:

